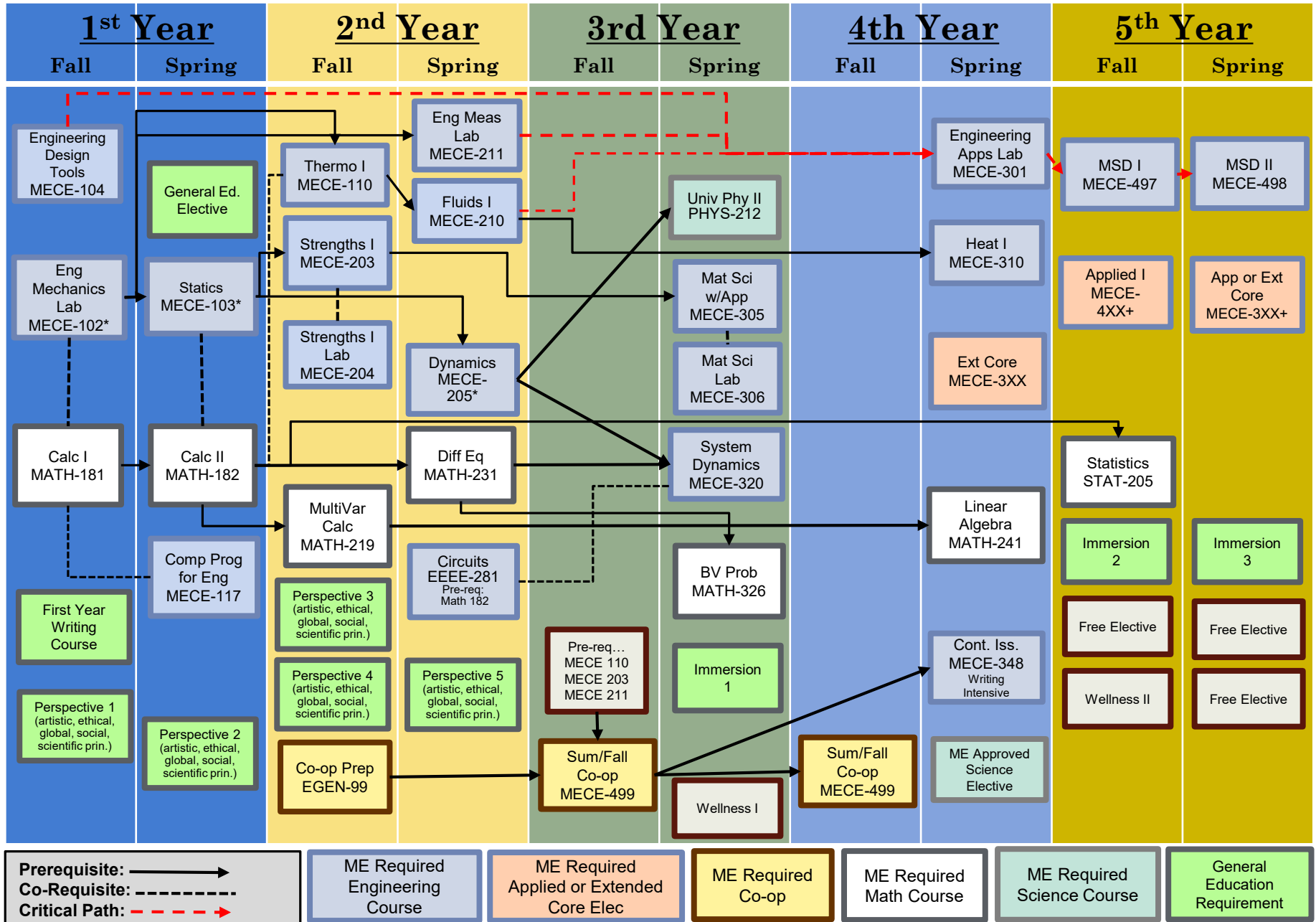


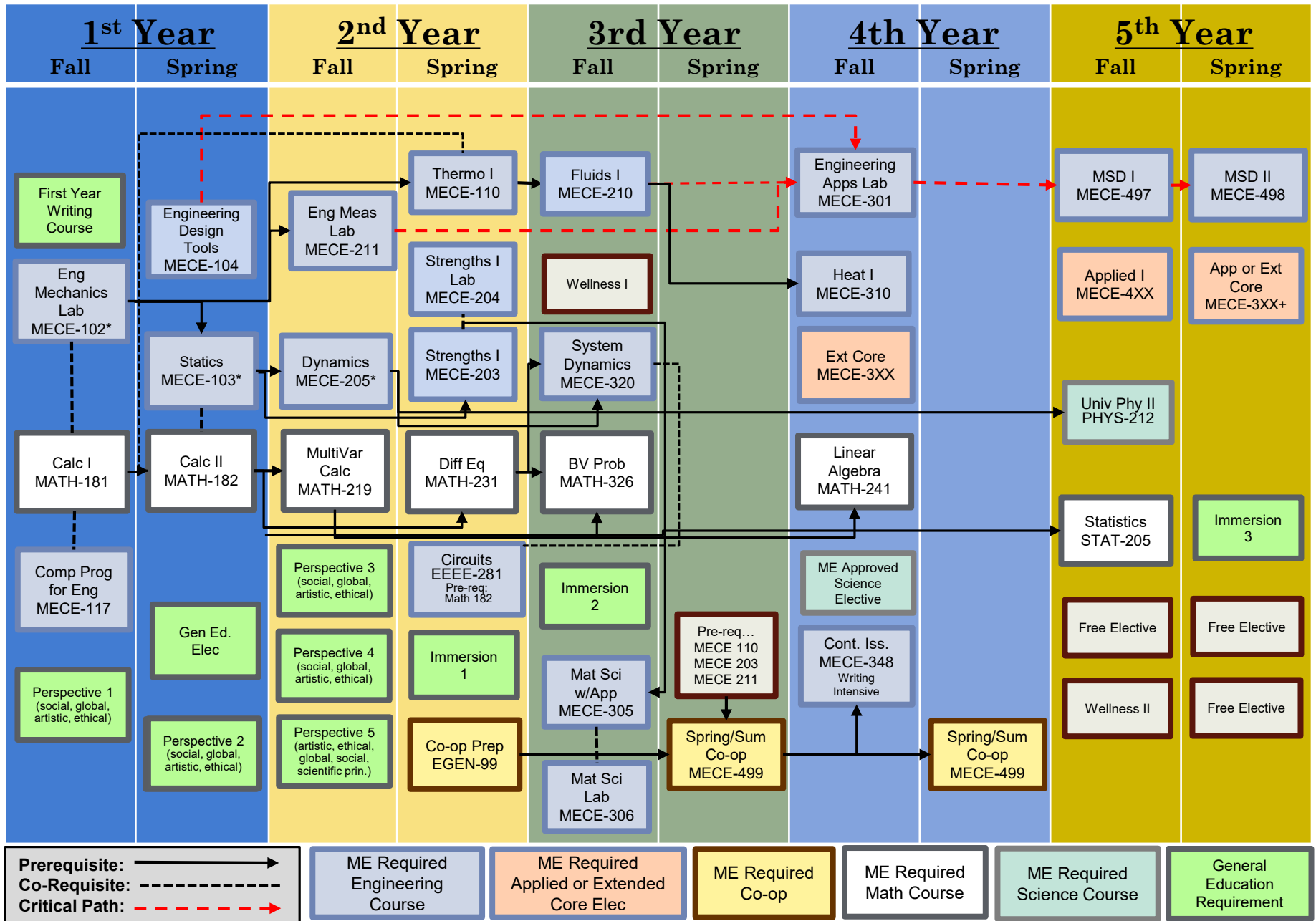
MECE-BS Flowchart (A-Block) ****for Students Entering in Fall 2023 or later****



* C-or better required

** This planning document is a tool to help you visualize your course sequence. Please refer to your AAR for a complete overview of your degree requirements. Course names and numbers are subject to change.**

MECE-BS Flowchart (B-Block) ****for Students Entering in Fall 2023 or later****



* C-or better required

** This planning document is a tool to help you visualize your course sequence. Please refer to your AAR for a complete overview of your degree requirements. Course names and numbers are subject to change.**