

R

AMIKIN

1 9 3 5



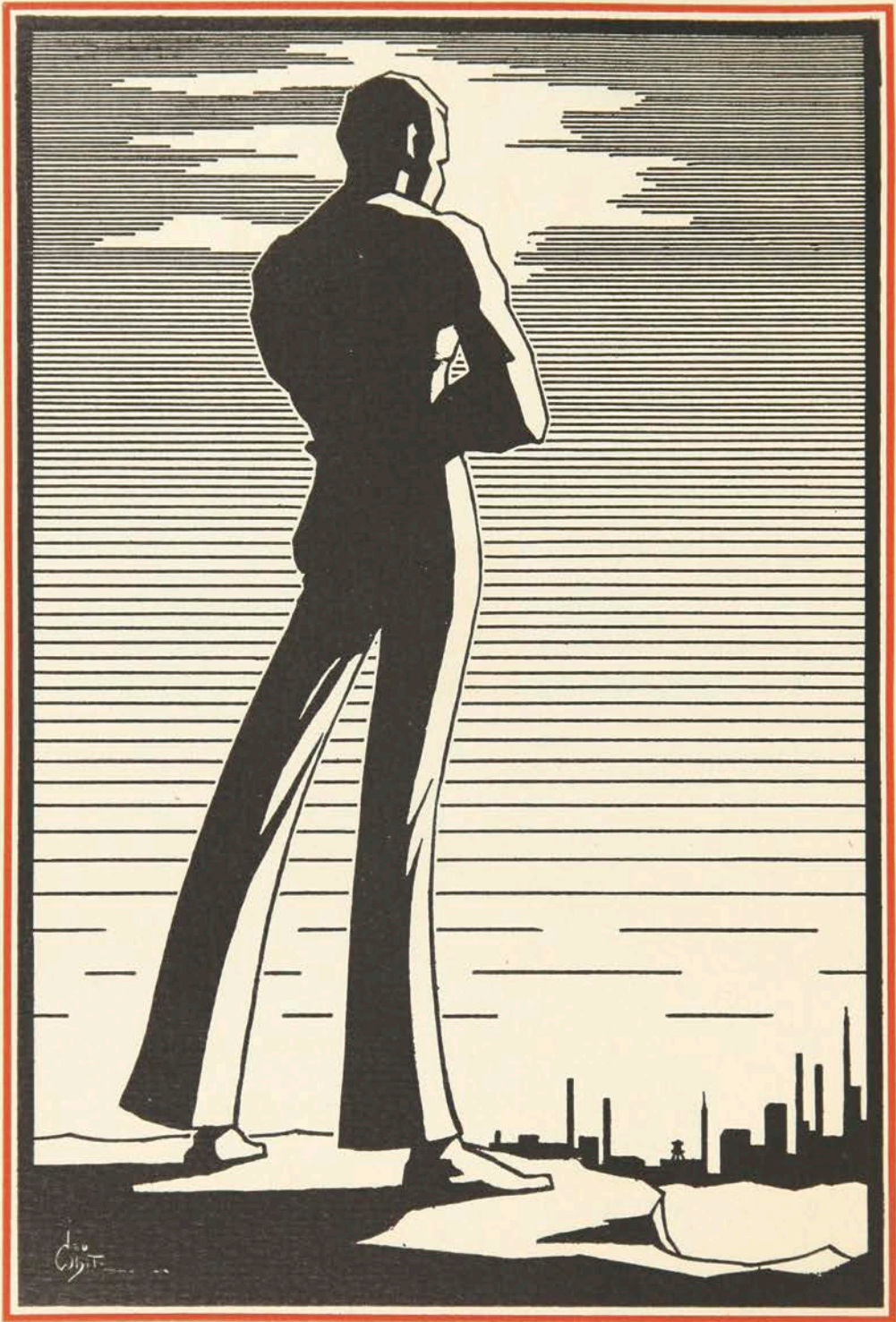
The
RAMIKIN
1935

C O P Y R I G H T I 9 3 5

WILLARD ZINKE
Editor-in-Chief

BERNARD RUMBUS
Business Manager

NED WHITE
Art Editor



The
RAMIKIN

1935

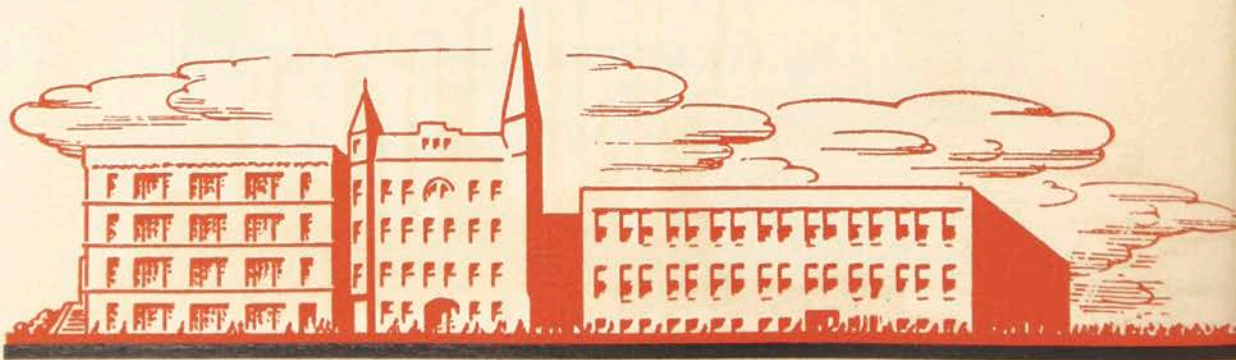


Published by

The RAMIKIN STAFF *of*
The ROCHESTER ATHENAEUM
and MECHANICS INSTITUTE
R O C H E S T E R , N . Y .

volume twenty-four

THE NINETEEN HUNDRED AND THIRTY-FIVE RAMIKIN STAFF, WITH THE COOPERATION OF THE STUDENT BODY AND ADMINISTRATION, HAS ENDEAVORED TO ACCURATELY PORTRAY IN A LITERARY AND PICTORIAL MANNER THE GLORIOUS HISTORY THAT HAS BEEN THE ROCHESTER ATHENAEUM'S THIS PAST YEAR . . . HOWEVER, THE RAPID CHANGES AND PROGRESS OF THESE DAYS ALLOW LITTLE TIME TO STAND AND MARVEL AT THE PAST ACHIEVEMENTS. CONSEQUENTLY, IT IS HOPED THAT THIS BOOK, WHOSE PAGES CONTAIN THE ACCOMPLISHMENTS OF THE ATHENAEUM, CLASSES, ORGANIZATIONS,



W

O

R

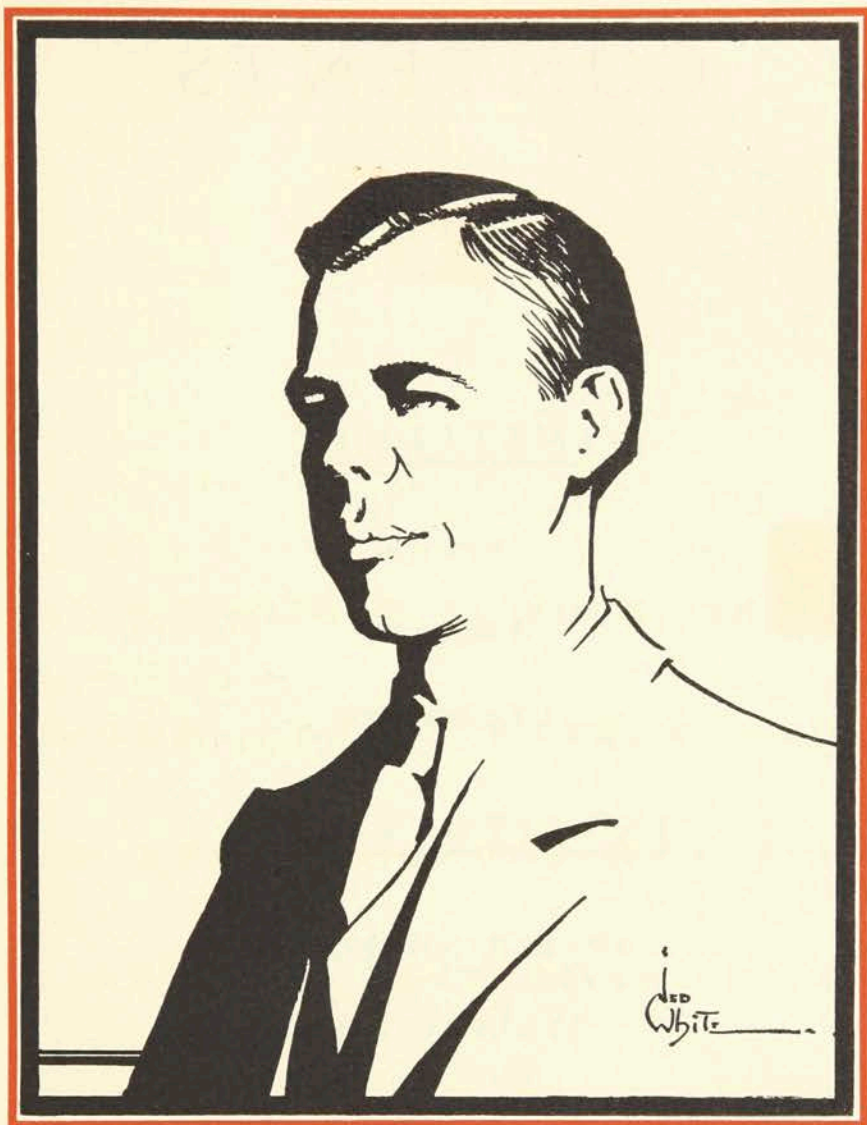
D

AND ATHLETICS FOR THE PAST YEAR, WILL PRESERVE THE MEMORIES OF THE NINETEEN HUNDRED THIRTY-FOUR — THIRTY-FIVE YEAR IN THEIR TRUE ORIGINAL COLOR . . . SO THIS, THE TWENTY-FOURTH VOLUME OF RAMIKIN IS PRESENTED TO THE UNDERGRADUATES, TO THE ALUMNI, AND TO THE BOARD OF DIRECTORS, AS ANOTHER CHAPTER IN THE SPLENDID HISTORY THAT IS THE ROCHESTER ATHENAEUM'S.



THIS BOOK IS DEDICATED TO
JOHN WARREN GILLON, WHOSE
LIFE AND COUNSEL SERVE US
AS AN INSPIRATION AND WHOSE
IDEALS LEAD US TOWARD THE
RICHER AND FULLER LIFE.

D E D I C



JOHN WARREN GILLON

A T I O N

CONTENTS



INSTITUTE

VIEWS

FACULTY

STUDENTS

INSTITUTE LIFE

GOVERNING BODIES

PUBLICATIONS

CLUBS

ATHLETICS

WOMEN'S ATHLETICS

FRATERNITIES

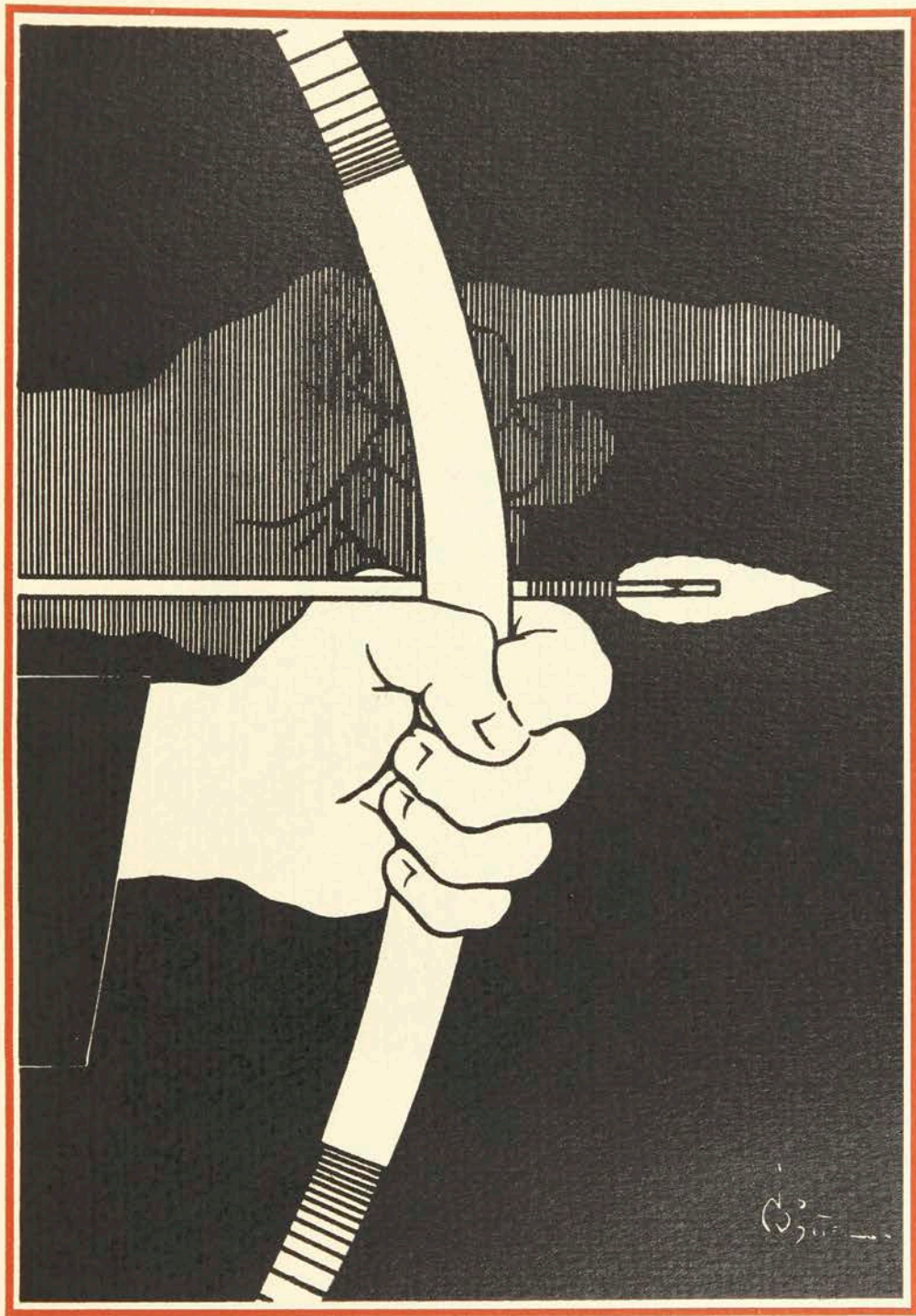


Book One



INSTITUTE

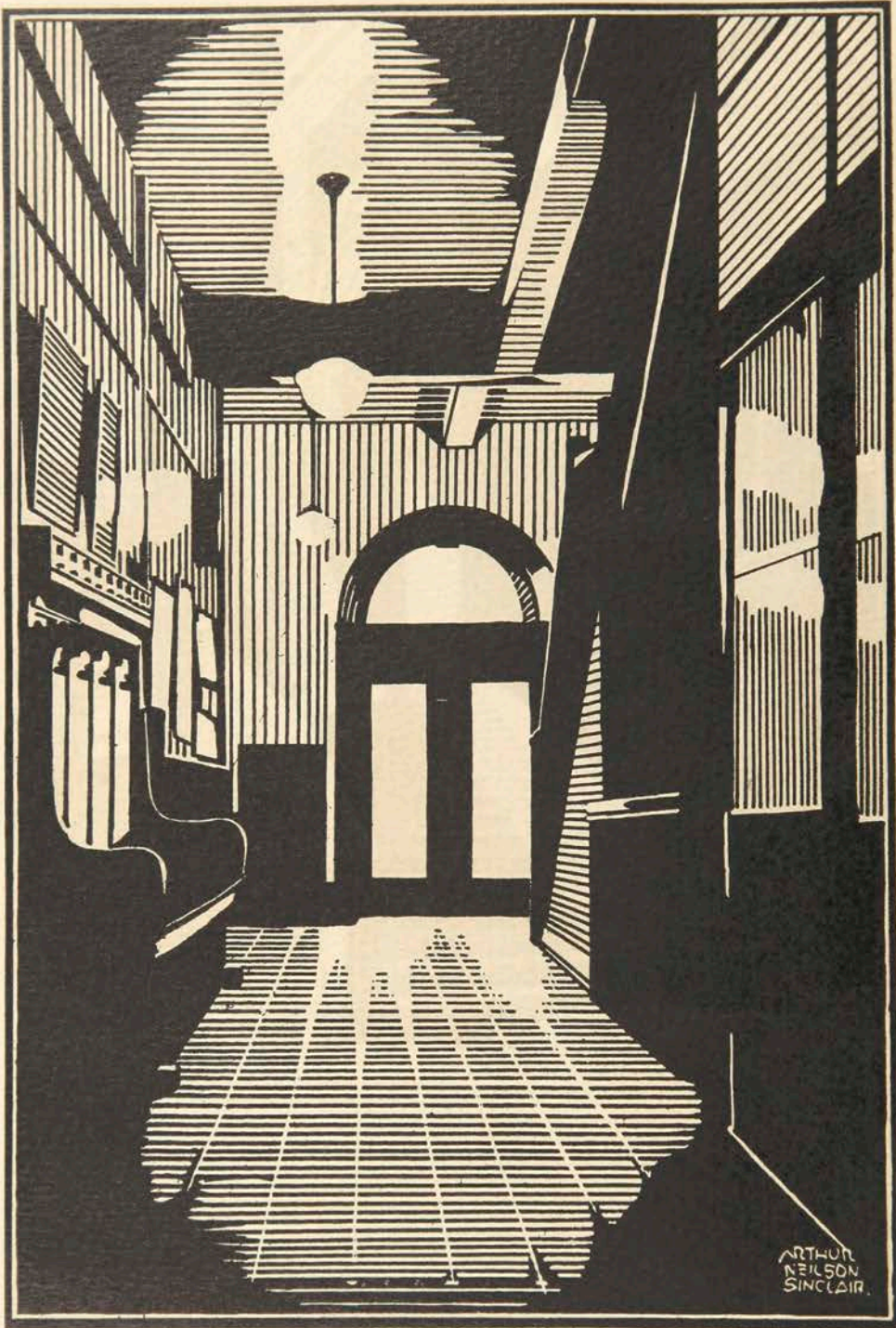
V I E W S • F A C U L



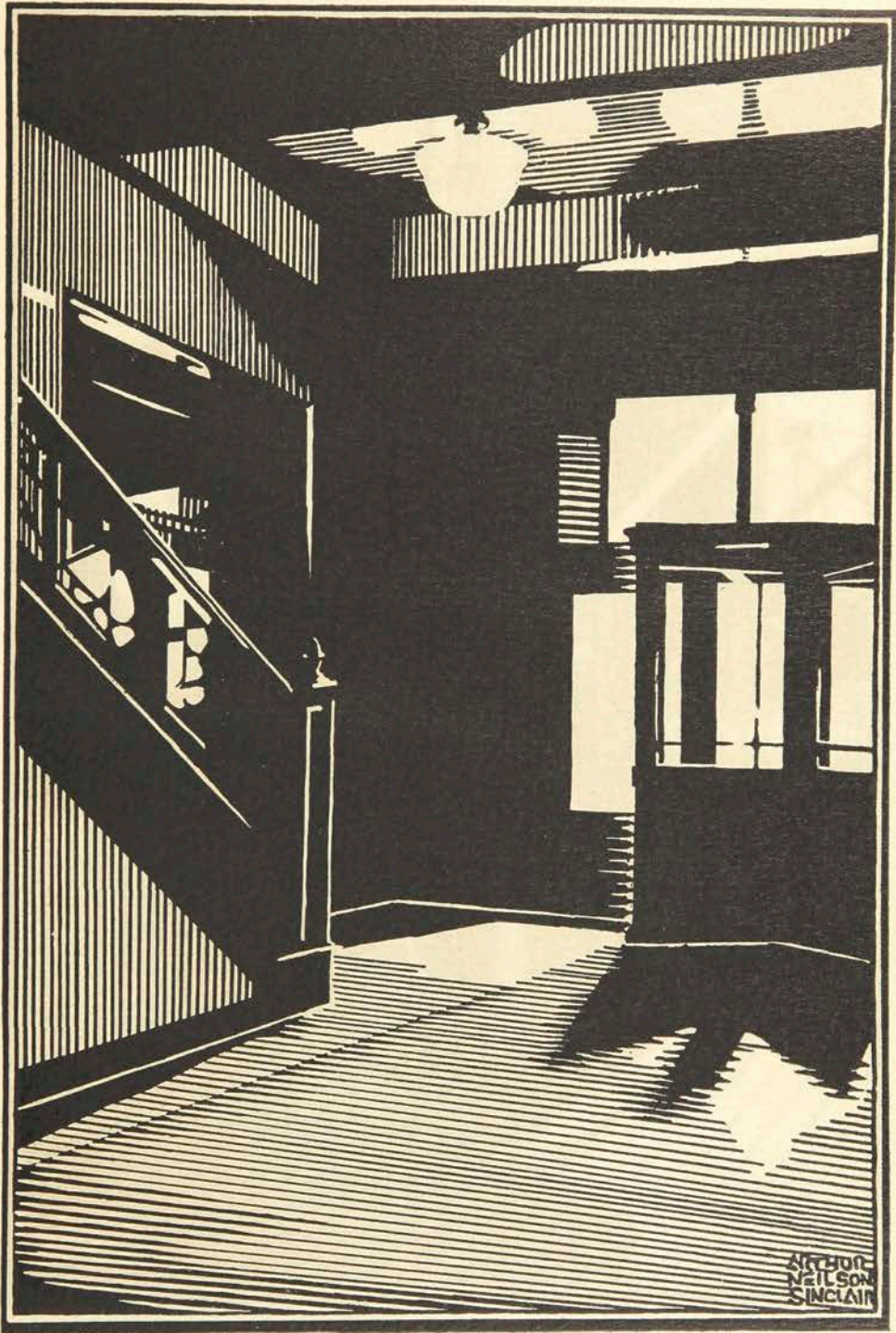
T Y • S T U D E N T S



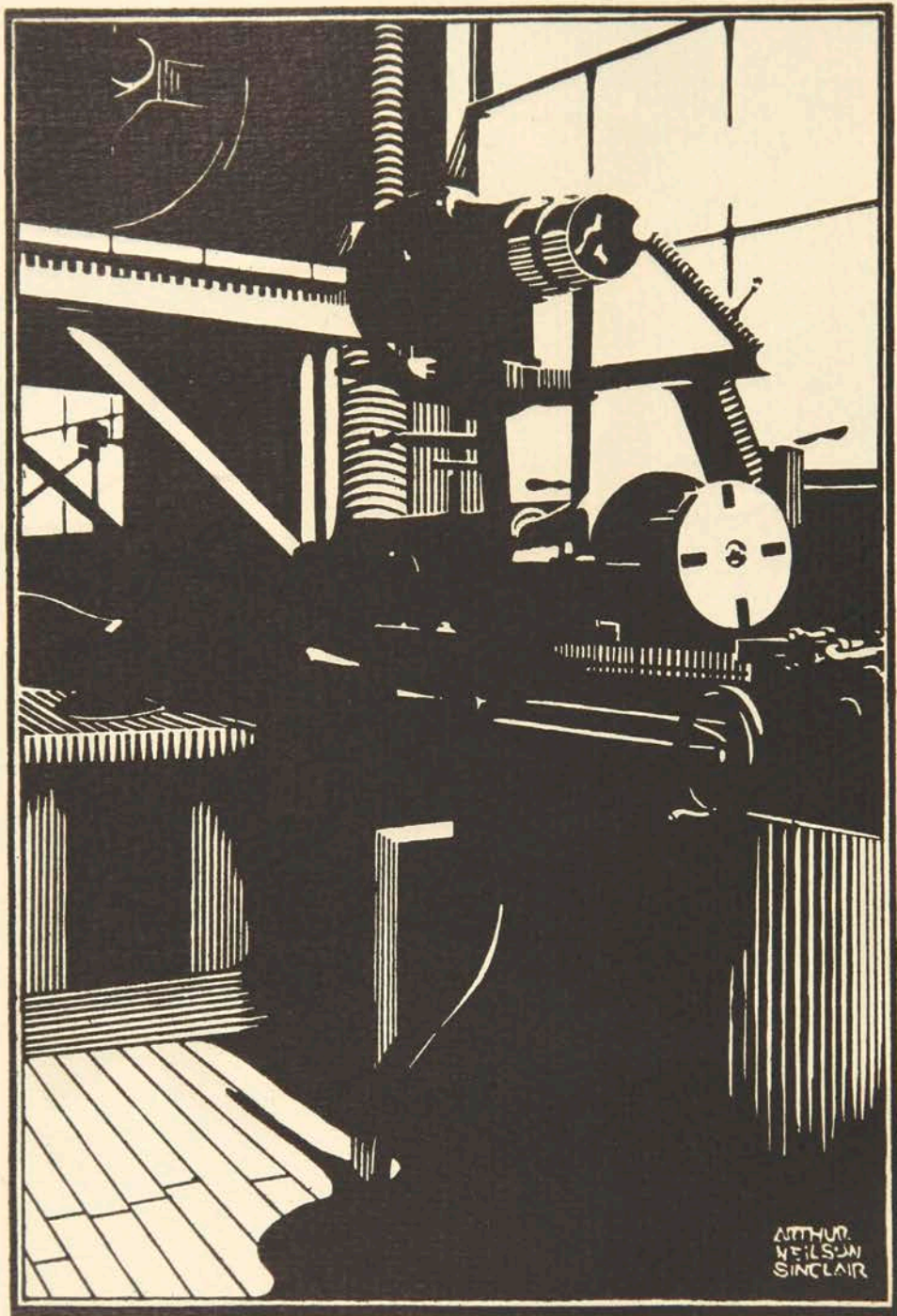
ARTHUR
NEILSON
SKETCHER



ARTHUR
NEILSON
SINCLAIR.



ARTHUR
NEILSON
SINCLAIR



ARTHUR
WELSON
SINCLAIR



F A C U L T Y

BOARD OF DIRECTORS

- ARTHUR W. BEALE
V. P. and Treas., Beale Const. Co.
- MRS. FANNIE R. BIGELOW
- JOHN P. BOYLAN
Pres., Roch. Telephone Corp.
- HERBERT W. BRAMLEY
Dir., Sibley, Lindsay & Curr Co.
- THEODORE C. BRIGGS
Sales Mgr., Lawyers Cooperative Publishing Co.
- KENDALL B. CASTLE
Attorney
- ALBERT K. CHAPMAN
Production Mgr., Eastman Kodak Co.
- BRACKETT H. CLARK
Sec., Cochrane Bly Co.
- GEORGE H. CLARK
*Treas., Mechanics Institute
Dir., Eastman Kodak Co.*
- ROYAL S. COPELAND, M.D.
U. S. Sen. from N. Y.
- A. EDWIN CROCKETT
*Mgr., Industrial Management Council,
Chamber of Commerce*
- MRS. HELEN O. DAVIS
- M. HERBERT EISENHART
Pres., Bausch and Lomb Optical Co.
- CHARLES K. FLINT
*Asst. Mgr., Kodak Park Works,
Eastman Kodak Co.*
- JAMES E. GLEASON
Pres., Gleason Works
- EDWARD A. HALBLEIB
Pres., Delco Appliance Corp.
- WILLIAM B. HALE
*Sec., Mechanics Institute
Pres. and Treas., E. R. Andrews Printing
Co. and Lawyers Cooperative Publish-
ing Co.*
- SOL HEUMANN
Pres., Keller, Heumann & Thompson
- P. RICHARD JAMESON
Vice-Pres., Taylor Instrument Companies
- MRS. ALICE LEE
- CARL F. LOMB
*Chairman, Board of Directors,
Mechanics Institute
Vice-Pres., Bausch & Lomb Optical Co.*
- FRANK W. MOFFETT
Vice-Pres., General Railway Signal Co.
- OSCAR H. PIEPER
*Vice-Pres., Ritter Dental Manufacturing
Co.*
- JOHN D. PIKE
Pres., John B. Pike & Sons
- JOHN A. RANDALL
Pres., Mechanics Institute
- RUSH RHEES
Pres., University of Rochester
- HERMAN RUSSELL
Pres., Rochester Gas & Electric Corp.
- BENJAMIN G. STALLMAN
General Contractor
- HARRY C. STEVENSON
Pres., Rochester Folding Box Co.
- RAYMOND L. THOMPSON
Treas., University of Rochester
- HERBERT S. WEET
Supt. of Schools, Retired
- CHARLES H. WILTSIE
Attorney



JOHN A. RANDALL

OUR PRESIDENT



Clifford M. Ulp



May D. Benedict

FACULTY

SCHOOL OF APPLIED ART

CLIFFORD M. ULP, *Director*
 HAROLD S. BEAL
 MILTON E. BOND
 ALLING M. CLEMENTS
 BYRON G. CULVER
 CHARLES C. HORN
 J. BURNETT MATSON
 MRS. RUTH H. ULP
 MRS. MINNIE R. WYMAN
 HERBERT H. BOHACKET

LIBERAL

WARREN G. DAVIS
 MARK ELLINGSON
 CALVIN C. THOMASON
 MRS. G. W. HOKE

GEO. W. HOKE
 BARTON E. STRATTON

SCHOOL OF HOME ECONOMICS

MAY D. BENEDICT, *Director*
 W. A. FENSTERMACHER
 NAN R. LINGLE
 EUNICE A. STRICKLAND
 BERTHA THURBER
 ELIZABETH G. VAN HORNE
 VIOLA M. WILSON
 DOROTHY D. ROBERTS
 HAZEL F. BURKEY

SCHOOL OF RETAILING

GEORGIANA W. HATHWAY, *Supervisor*
 RUTH CUNNINGHAM
 MRS. ELIZABETH HICKS

APPLIED ARTS

*Culver, Clements
 Matson, Ulp, Wyman, Horn*

FOOD ADMINISTRATION

*Strickland, Proper, Barton, Thomason, Roberts, Thuber
 Van Horne, Burkey, Benedict, Wilson, Lingle*





Georgian W. Hathway

FACULTY



Alfred A. Johns

MRS. JEAN M. STAMPE
ANNA MAY JOHNSTON

SCHOOL OF INDUSTRIAL ARTS

ALFRED A. JOHNS, *Director*

ELECTRICAL

EARLE M. MORECOCK, *Coordinator*
EARL C. KARKER, *Dept. Head*
WALTER CRILEY
CLARENCE E. TUITES

MECHANICAL

HERMAN MARTIN, *Supervisor*
HAROLD J. BRODIE
CYRIL DONALDSON
J. WARREN GILLON
SHERMAN B. HAGBERG

RETAILING SCHOOL

*Hoke, Thomason, Davis, Ellingson, Barton, Koch
Cunningham, Proper, Hoke, Hathaway, Johnson, Hicks, Stampe*

EDWARD H. LANG
ROYAL WELLER

CONSTRUCTION SUPERVISION

HERMAN MARTIN, *Supervisor*
WM. A. CLARK
THOMAS H. CAPSON
HERBERT BOHACKET

INDUSTRIAL CHEMICAL

ALFRED A. JOHNS, *Supervisor*
RALPH H. BRADEN
MARY D. GILLARD
EDWARD PARK HARRIS

PHOTO TECHNOLOGY

MARK ELLINGSON, *Supervisor*
F. W. BREHM
C. B. NEBLETTE
MARTHA G. BONKOWSKI

INDUSTRIAL ARTS

*Hoke, Lang, Weller, Donaldson, Davis, Stratton, Brehm, Clark, Bohacket
Tuites, Braden, Criley, Koch, Hagberg, Brodie, Capson, Harris
Gillon, Ellingson, Morecock, Johns, Martin, Karker, Neblette, Thomason*



THE SADNESS OF GRADUATION

Upon graduation we, the Seniors, leave the Athenaeum. We leave more than the physical buildings, books, halls, and settings; we leave many of our friends in the Faculty and Student Body. Friends who have been a vital factor in making the past three years three of the most profitable and enjoyable years of our life.

We left these friends in June for the past two years knowing that another September would bring us together again, but not so this year. It may be years before many of us shall again meet. September shall roll around again but no more familiar halls to walk through—no more faculty reception—initiation week shall pass without our presence—no more school dances—no more games—in fact, no more school life as a class—our school days at the Athenaeum are over—ended.

Memories, if allowed, can be real and live in their true color and glory and it shall be these memories that shall keep the past three years alive forever. Through the ensuing years we shall travel far and form many new friendships but always we will have the memories of our days and friends at old R. A. M. I.

WILLARD ZINKE



STUDENTS



Andres, Sawtelle, Evert

SENIOR OFFICERS

● FRANKLIN F. EVERT	<i>President</i>
LOUISE SAWTELLE	<i>Vice-President</i>
CAROLYN BENEDICT	<i>Secretary</i>
ROBERT ANDRES	<i>Treasurer</i>

A
P
P
L
I
E
D
A
R
T
S

J. ORVILLE BREWER
34 Atkinson, Rochester
Art League (1, 2, 3).

MARY P. COOK
42 Chadwel Road, Rochester
Glee Club (1, 2, 3); RAMIKIN
(2, 3).



GERARD LOUIS DILL
43 State St., Pittsford, N. Y.
Chi Beta Kappa (1, 2), Vice-Pres.
(3); Fraternity Basketball (1, 2,
3); Art League (1, 3); Inter-
Fraternal Council (2).

HELEN FRANKLIN
Gowanda, N. Y.
Glee Club (1, 2, 3); Hiking (1, 2,
3); Riding (2, 3); Senior Life
Saving (1); G. A. A. (1); Dorm
Council (1); Sec. Class (1); Art
League (Vice-Pres. and Student
Council Representative (2, 3);
RAMIKIN (2); Dramatic Club
Vice-Pres. (3); Pres. Student
Council (3).



SALLY GERARD
1650 East Ave., Rochester

HORACE A. HEMENWAY
Westfield, N. Y.
Glee Club (1).



GEORGE E. HESSELINK
242 Bryan Street, Rochester
Art League (1, 2, 3).

DOROTHY HISCOCK
Spencerport, N. Y.
Art League (1, 2, 3); Psimar,
Copy Editor (2), Co-Editor (3);
RAMIKIN (3); Glee Club (1, 2, 3).



LILLIAN J. KOLKO
9 Grant St., Rochester
Glee Club (3); Dramatic Club
(3).

MARY M. Mc MAHON
1134 Genesee St., Rochester
Art League (1, 2, 3); Secretary
Junior Class; Glee Club (1).



ALVIN MERRITT
195 Fairhaven Rd., Rochester
Art League (1, 2, 3).

BERNARD MURPHY
38 Grace Ave., Ticonderoga, N. Y.
Phi Sigma Phi; Glee Club (1);
Art League (1, 3); Fraternity
Basketball (2, 3).



A
P
P
L
I
E
D

A
R
T
S



PHILIP S. O'LOUGHLIN
99 Ferris St., Rochester
Art League (1, 2).

T. C. PRIDGEN
91 Pontiac Drive, Rochester
Sec. Student Council (2); Art
League (2).



ROSYNE RAETZ
57 Ferndale Crescent, Rochester
Glee Club (1).

CHARLES REYNOLDS
39 Saranac St., Rochester
Art League (1, 2, 3).



EVELYN TEUTE
Westfall Road, Rochester
Art League (1, 2); Treasurer (2);
Glee Club (2, 3); Hiking (2);
Art Editor Psimar (3); G. A. A.
Council (3).

JOSEPH D. VOLPE
85 Laurelton Rd., Rochester
Art League (1, 2); Cheer-Leader
(1, 2, 3).



NED WHITE
Mt. Morris, N. Y.
RAMIKIN (3).

JOSEPHINE YALOWICH
589 Norton St., Rochester
Riding (1, 2, 3); Dramatics (3);
Art League (3).

A P P L I E D
A R T S



C
H
E
M
I
S
T
R
Y



ROBERT F. BROWN
Rochester
M. I. C. A. Club (1, 2, 3); Glee
Club Orchestra (1).

ROBERT J. BROWN
Troy, N. Y.
M. I. C. A. Club (1, 2, 3); Wrest-
ling (1, 3).



MARCO CRANDALL
Binghamton, N. Y.
M. I. C. A. Club (1, 2, 3).

RAYMOND L. EBERT
Fairport, N. Y.
Treas. of Freshman Class; Glee
Club; Chi Epsilon Phi Frater-
nity (1, 2, 3); Fraternity Bas-
ketball (1, 2, 3).



WATSON EGGLESTON
Sauborn, N. Y.
M. I. C. A. Club (1, 2, 3).

LEO OSIKA
Utica, N. Y.
M. I. C. A. Club (1, 2, 3), Glee
Club (1).



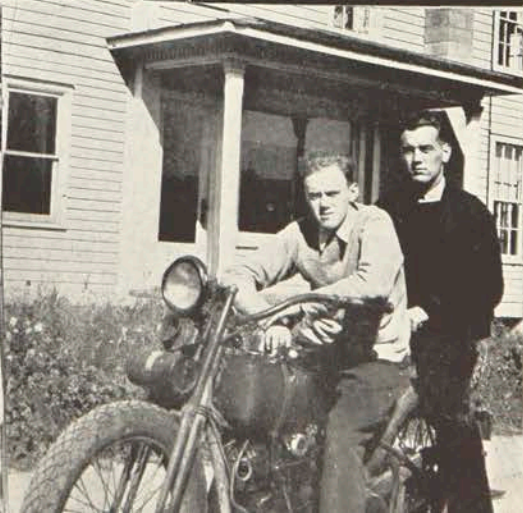
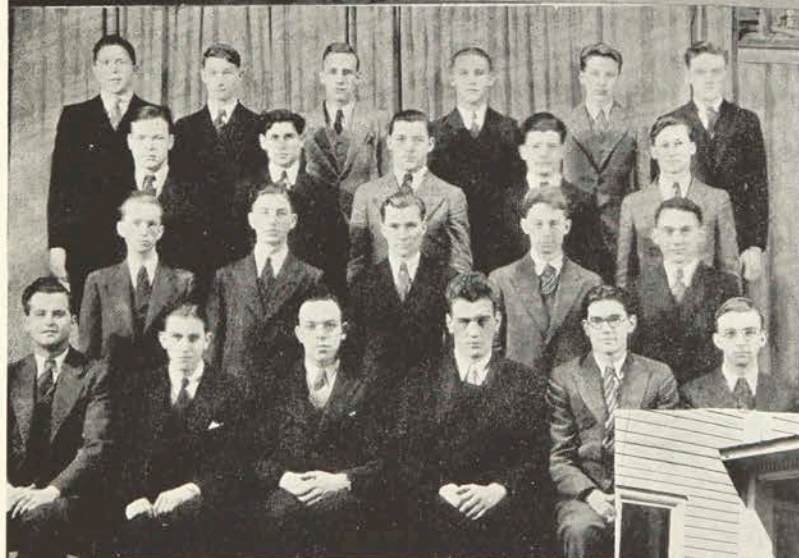
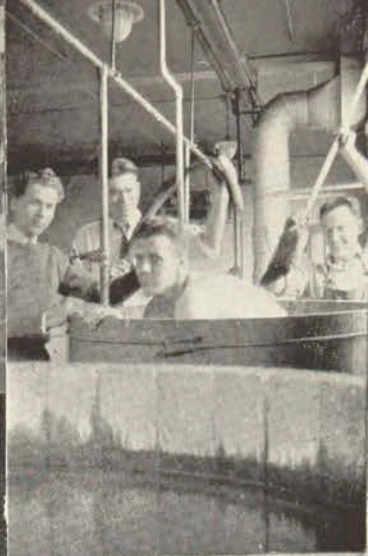
E. LEONARD RIDYARD
Waterloo, N. Y.
Glee Club (2, 3); M. I. C. A.
Club (1, 2, 3); Psimar Staff
(1, 2, 3); Associated Editor (3);
RAMIKIN Staff (3).

JOHN E. SEARLS
Rochester
Chi Delta Phi (2, 3); M. I. C. A.
Club.



KEITH WHITMORE
Rochester
M. I. C. A. Club (1, 2, 3).

C
H
E
M
I
S
T
R
Y





ROBERT J. ANDRES

Collins, N. Y.

Student Builders Society (1,2,3);
Glee Club (1, 2,); Treasurer of
Senior Class; Freshman Basket-
ball.

LOUIS J. BREINER

198 Orange St., Rochester

Student Builders Society (1,2,3).



WILLIAM A. CRAIB

401 Sawyer St., Rochester

Chi Epsilon Phi; Pres. Freshman
Class; Fraternity (2, 3); Fra-
ternity Basketball (2, 3); Chair-
man Senior Class Dinner Dance;
Junior Prom Committee; Builders
Society (1, 2, 3).

THOMAS KILGRESS

322 E. Main St., Frankfort, N. Y.

Chi Delta Phi (1, 2,3); Student
Builders Society (1, 2,3); Frosh
Basketball (1); General Council;
Fraternity Basketball (2); Bas-
ketball (3) Frosh Baseball; Glee
Club (1, 2); Fraternity (1, 2, 3).



JAMES F. MORRISON

132 Raeburn Ave., Rochester

Pi Kappa Gamma; President of
Builders Society (3); Chairman
of Social Committee Frosh Class
(1); Fraterni y Basketball (1, 2,
3).

BYRON D. NEFF, JR

LeRoy, N. Y.

Chi Epsilon Phi; Builders Society
(1, 2, 3); Fraternity (2, 3).



MICHAEL SZVEC

22 Geneva Street, Rochester

Student Builders Society (1,2,3).

FRANK PAUL VILLANI

Youngstown, Ohio

Chi Epsilon Phi (1, 2), Pres. (3);
Fraternity Basketball (1, 2, 3);
Student's Builders Society (1, 2,
3); Dramatic Club (2, 3); Glee
Club (1); Psimar Sports Co-
Editor (1, 2,); RAMIKIN Ad-
vertising Manger (2, 3); Gen-
Student Council (3); Inter-
fraternal Council (3).



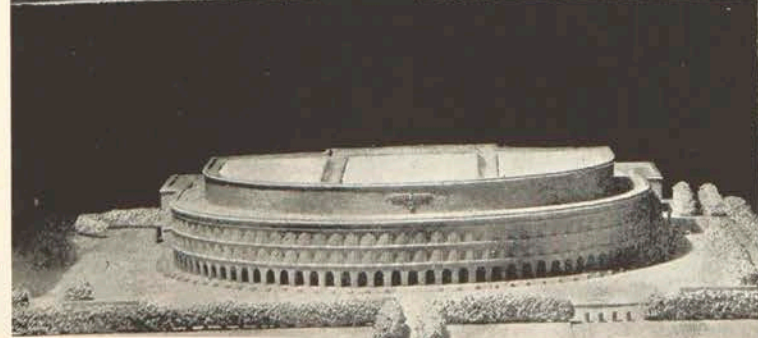
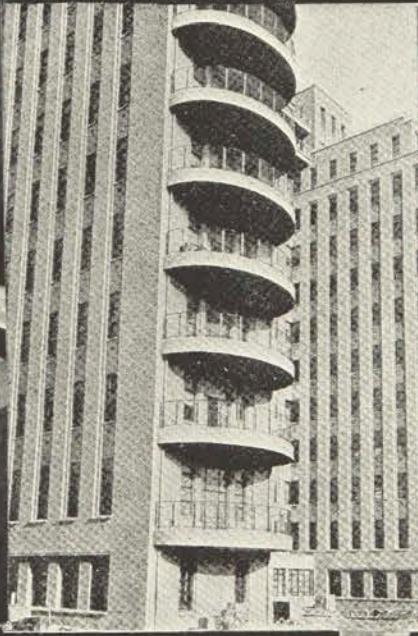
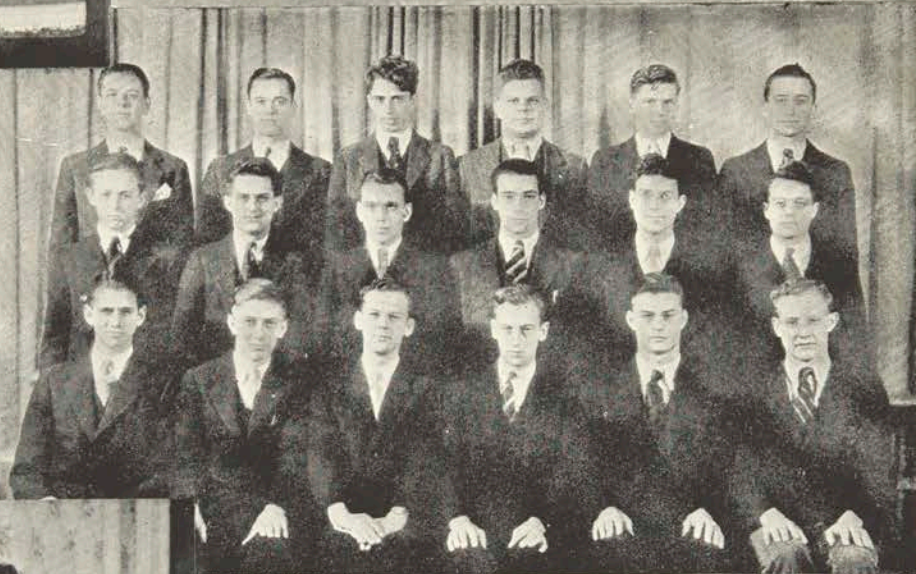
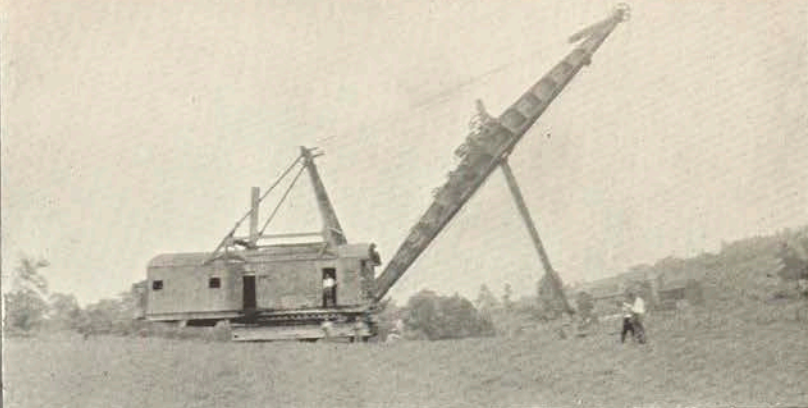
LEE VOGTLI

Gowanda, N. Y.

Pi Kappa Gamma; Student
Builder's Society (1, 2, 3); Glee
Club (1, 2); Fraternity Basket-
ball (1, 2,); Sec. Fraternity (3).

C
O
N
S
T
R
U
C
T
I
O
N

S
U
P
E
R
V
I
S
I
O
N



E
L
E
C
T
R
I
C
A
L



ROBERT G. AREND
122 Scholfield Rd., Rochester

SHIRL BAILEY
Newcomb, N. Y.
Chi Delta Phi; Fraternity B. B. (1, 2, 3); E. S. A. (1, 2); Class Baseball (1, 2); RAMIKIN Staff (3); Wrestling (3).



MORTON BORISOFF
870 Atlantic Ave.
Electrical Student Ass'n. (1,2,3).

HERBERT BOWDEN
490 Court St., Auburn, Maine
Glee Club (2); E. S. A. (3).



EMERSON A. BOYSON
Rome, N. Y.
E. S. A. (1, 2, 3).

HOWARD A. CLARK
Maybrook, N. Y.
Electrical Students Ass'n. (1, 2, 3); Glee Club (1, 2, 3); Junior Class Ring Committee (2); Junior Prom. Committee (2); Athletic Ass'n. Student Council (2); Assistant to Wrestling Managers (1, 2).



ROBERT DIMPFL
138 Penhurst St., Rochester
Phi Sigma Phi; Fraternity (1, 2, 3); Sec., (2), Vice-Pres. (3); Inter-fraternal Council (3); Student Council (3); E. S. A. (1, 2, 3); Membership Committee (2); E. S. A. Pres. (3).

FRANKLIN F. EVERT
99 Eiffel Pl., Rochester
Phi Sigma Phi; E. S. A. (1, 2, 3); Wrestling (1, 2, 3); Treas. of Fraternity (1); Junior Prom Committee (2); Fraternity Basketball (2, 3); Assistant Business Manager, RAMIKIN (3); Student Council Representative (3); Chairman of Student Council (3); President Senior Class (3); M. Club (1, 2, 3).



CHARLES FINLAND
Geneva, N. Y.
Fraternity; Chi Delta Phi; Member E. S. A. (1, 2, 3); Basketball (1, 2); Member Executive Student Council (2).

DEAN FREDERICKS
Jamesport, Long Island

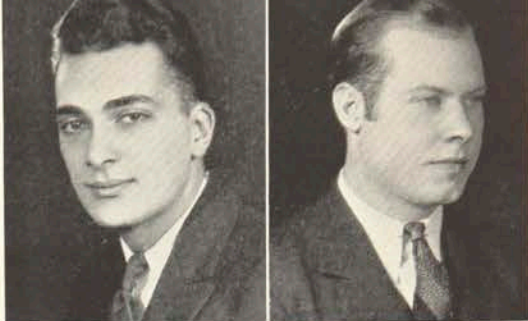


BERNARD GEYER
198 Trafalgar Street, Rochester
Phi Sigma Phi; Fraternity (1, 2, 3); E. S. A. (1, 2, 3); Glee Club Sec., (2, 3); Student Council (3); Inter-Fraternal Council (3).

JUDSON JACKSON
West Palm Beach, Florida
Glee Club (1, 2); Band (1, 2).

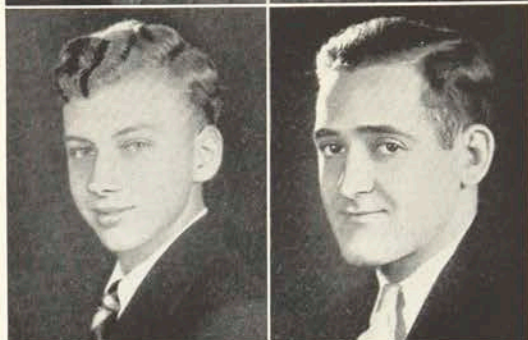
JAMES BROWN
1202 Taylor Ave., Utica, N. Y.
Phi Sigma Phi; Fraternity (1, 2, 3); Pres. (2); Member Inter-Fraternal Council (2); Junior Class Pres. (2); Vice-Pres. Student Council (3); Chairman Senior Ball Committee; Member of E. S. A. (1, 2, 3); Chairman Frosh Initiation Committee (3).

WYDE LYNCH
Newcomb, N. Y.
E. S. A. (1, 2, 3).



EARL W. MAHUSON
East Rochester, N. Y.
E. S. A. (1, 2, 3).

LEWIS MORGAN
Cortland, N. Y.
Fraternity Chi Beta Kappa (2, 3); Pres. M. Club (3); Captain of Wrestling (3); Wrestling (1, 2, 3).



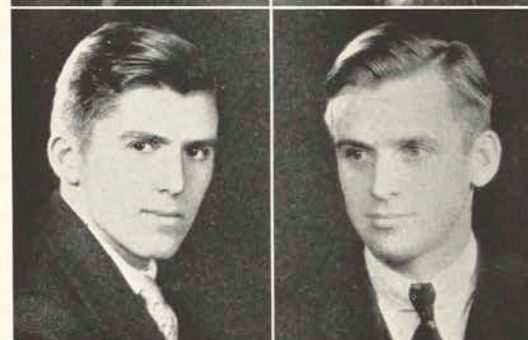
ALAN NEWTON
Canandaigua, N. Y., R. D. No 2
Chi Delta Phi; Fraternity (2, 3); E. S. A. (1, 2, 3); Vice-Pres. E. S. A. (3).

GEORGE C. PFENNINGER
21 Pembroke St., Rochester
E. S. A. (2, 3).



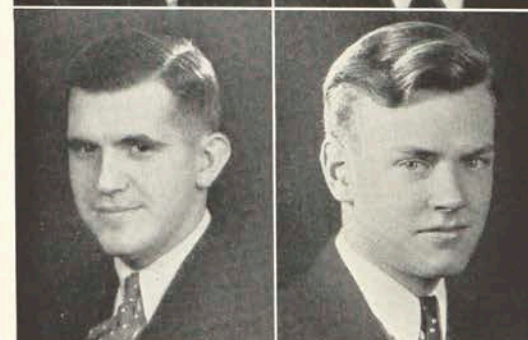
ADELBERT H. SMITH
Marathon, N. Y.
Pi Kappa Gamma; Fraternity (1, 2, 3); Fraternity Basketball (1, 2); Class Baseball (1, 2, 3); E. S. A. (2, 3); Band (2); Secretary of E. S. A. (2); Wrestling (3); Inter-Fraternal Council (3).

LAWRENCE TALLMAN
St. Johnsville, N. Y.



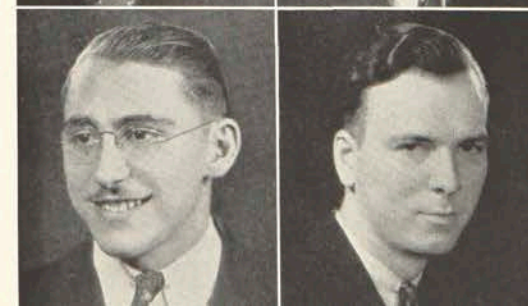
CHESTER W. TEGTMEYER
1109 Noyes St., Utica, N. Y.
Phi Sigma Phi; Inter-Fraternal Council (2, 3); Pres. Inter-Fraternal Council (3); Fraternity (1, 2, 3); Treas. (2); E. S. A. (1, 2, 3); Fraternity Basketball Manager (2); Class Softball (1, 2, 3); Junior Prom Committee.

G. R. TURVEREY
Manlius, N. Y.
Treas. of E. S. A.; Member of E. S. A.

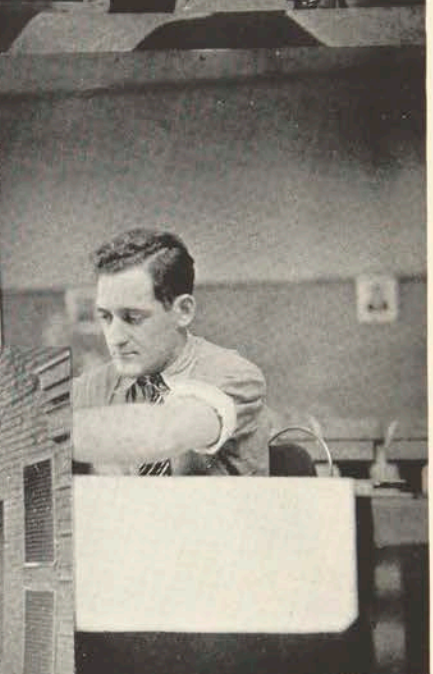


AMERICO VALENTI
Rochester

THOMAS WRIGHT
Skaneateles, N. Y.



E
L
E
C
T
R
I
C
A
L



F
O
O
D

A
D
M
I
N
I
S
T
R
A
T
I
O
N

LOUISE L. ARNEKE

Binghamton, N. Y.

Alpha Psi; Glee Club (1, 2, 3); Survey Club (1, 2, 3); Sorority (1, 2, 3); Treasurer (2, 3); Dormitory Council (2).

RUTH AUSTIN

Medina, N. Y.

Sorority (1, 2, 3); Social Secretary (1); Glee Club (1); Survey Club (1, 2, 3); Dormitory Council (3); Dramatic Club (3).



CAROLYN BENEDICT

Auburn, N. Y.

Sorority (1, 2, 3); Student Council Representative for Sorority; Sorority, President (3); Glee Club (1); Survey Club (1); Intersorority (3); Secretary of Class, (3).

RUTH BROOKS

Rush, N. Y.

Sorority (1, 2, 3); Vice-President of Sorority (3); Social Chairman of G. A. A. (3); Glee Club (1, 2).



ETHEL COFFEE

Fairport, N. Y.

Survey Club (1, 2, 3); G. A. A. (1, 2, 3).

ALICE DIBBLE

Oakfield, N. Y.

Survey Club (1, 2, 3); Student Council (2); Glee Club (3).



NEVA FENTON

Savona, N. Y.

Glee Club (1, 2, 3); Bowling (1, 2); Dramatic Club (2, 3); Survey Club (1, 2, 3); Hiking (1).

HELEN FLEMING

Rochester



LUCILLE HARTWIG

Niagara Falls, N. Y.

Sorority (3); Glee Club (1, 2, 3); Survey Club (1, 2, 3); Dramatic Club (2, 3); Secretary of Dramatic Club (3); Bowling (1, 2); Tournament (2); Tennis and Badminton (1, 2, 3); Tournament (2, 3); Manager of Tennis and Badminton (3); Golf (1); Hiking (1).

HARRIET C. HUTCHINSON

143 Burlington Avenue
Rochester

Glee Club (1, 2); Psimar (1); Advertising Staff (2); Business Manager (3); RAMIKIN (2, 3).



JUNE KIMBALL

Forest Hills, East Rochester

Social Chairman, G. A. A. (2); Vice-Pres. G. A. A. (3); Riding (2, 3).

ANNA MAY KOBEL

134 Weeger Street, Rochester

Glee Club (1, 2, 3); Garagoyles-Dramatic Club Director (3); Survey Club (1, 2, 3).



F
O
O
D

A
D
M
I
N
I
S
T
R
A
T
I
O
N



MARGARET LEITES

Hamilin, N. Y.

Alphi Psi; Food Chairman, Sorority (2); Student Council Rep. (3); Survey Club, Vice-Pres. (3).

HARRIET MILLER

Rochester

Sorority (1, 2, 3); Sorority, Vice-President (2); Glee Club (1, 2); Survey Club (1); Intersorority Representative (2); Student Council Representative (3); Class General Chairman (3).



MINNIE C. POLVINO

159 Central Park, Rochester

Bowling (2); Survey Club (1, 2, 3); Secretary of Survey Club (3).

CAROLYN RUBIN

Williamson, N. Y.

Survey Club (1, 2, 3); Glee Club (1, 2); Grind Editor RAMIKIN (1); Basketball (1); Riding (1, 2); Bowling (1, 3); Hiking (1); Dramatic Club (3); Psimar (1).



CHRISTINE D. SADLON

Little Falls, N. Y.

President of Survey Club (3); Senior Representative of Dorm. Council (3); Survey Club (1, 2, 3); Glee Club (1, 2); Tennis (2); Student Council (3).

MIRIAM SPICE

59 Campbell Park, Rochester

Glee Club (1, 3); Survey (1, 2, 3); Golf (1).



LOIS YAUCHZI

Rochester

Sorority (1, 2, 3); Glee Club (1); Dramatic Club (3); Riding (3).

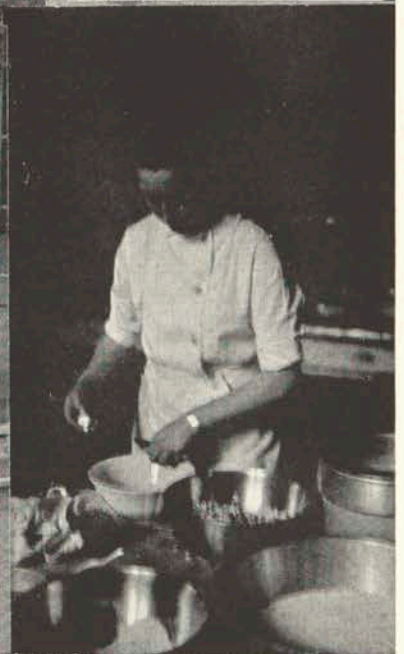
IRENE M. ZIMMER

177 Bartlett Street, Rochester

Delta Omicron; Survey (1, 2, 3); Sorority (1), Treas. (2), Vice-Pres. (3).

F
O
O
D

A
D
M
I
N
I
S
T
R
A
T
I
O
N





LEONARD E. BLAIR

Massena, N. Y.

M. S. A. (1, 3); Glee Club (3);
Dramatic Club (3).

PHILIP CULBERTSON

147 Avis Street, Rochester

Chi Delta Phi, Sec. (2, 3); M. S.
A. (1, 2, 3); Inter-Fraternal
Basketball (1, 2, 3).



H. MERLE HANFORD

Hastings-on-Hudson, N. Y.

Glee Club (3); M. S. A. (3).

E. ROSEWELL HAZARD

118 Aberdeen Street, Rochester

Glee Club (1, 2, 3); Mechanical
Students Association (1, 2, 3);
Dramatic Club (3); Psimar (2).



BERNARD KUNES

Athens, Pa.

Pi Kappa Gamma; Inter-Fraternal
Council (2, 3); Fraternity,
Pres. (3); M. S. A. (1, 2, 3).

BERNARD RUMBUTIS

37 Dayton St., Rochester

Psimar (1, 2); Business Manager
(2); RAMIKIN (3); Business
Manager (3); M. S. A. (1, 2, 3);
Dramatics (3).



W. F. RYAN

2 Colbert Place, Rochester

Chi Delta Phi; Glee Club (1, 2,
3).

HAROLD SMITH

Rochester



PETER TURBUSKA

Rochester

Chi Delta Phi; M. S. A. (1, 2),
Pres. (3); Basketball (1, 2, 3);
M. Club (2, 3), Vice-Pres. (3).

EARL TREVETT

Orchard Park, N. Y.

Pi Kappa Gamma; Glee Club
(1, 2, 3); Frat. (1, 2, 3); Vice-
Pres. of Frat (3); Inter-Fraternal
Council (2, 3); Treas. of Inter-
Fraternal Council (3); M. S. A.
(1, 2, 3); Wrestling Manager.
(3); Psimar (2).



WILSON VAN DUSEN

Elmira, N. Y.

Chi Delta Phi; M. S. A. (2);
Vice-Pres. (3); Fraternity Basket-
ball (1, 2, 3); Fraternity (1, 2);
Vice-Pres. (3).

ERNEST VAN STEENBURGH

Maybrook, N. Y.

Wrestling (1, 2); M. S. A. (1, 2,
3); Glee Club (3) Librarian (3);
M. Club (3).

JACK H. WELCH

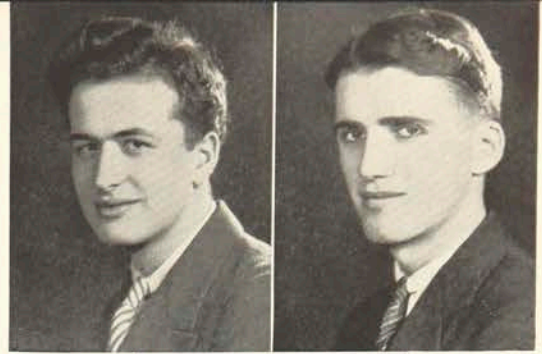
Auburn, N. Y.

Chi Delta Phi; M. S. A. (1, 3);
Glee Club (1); Fraternity (1, 2,
3), Pres. (3); Student Council
Representative (2); Inter-Frat-
ernal Council (3); Fraternity
Basketball (1).

CLAUDE A. WINSLOW, JR.

Elmgrove Rd. Coldwater, N. Y.

Mechanical Student's Associa-
tion (3).



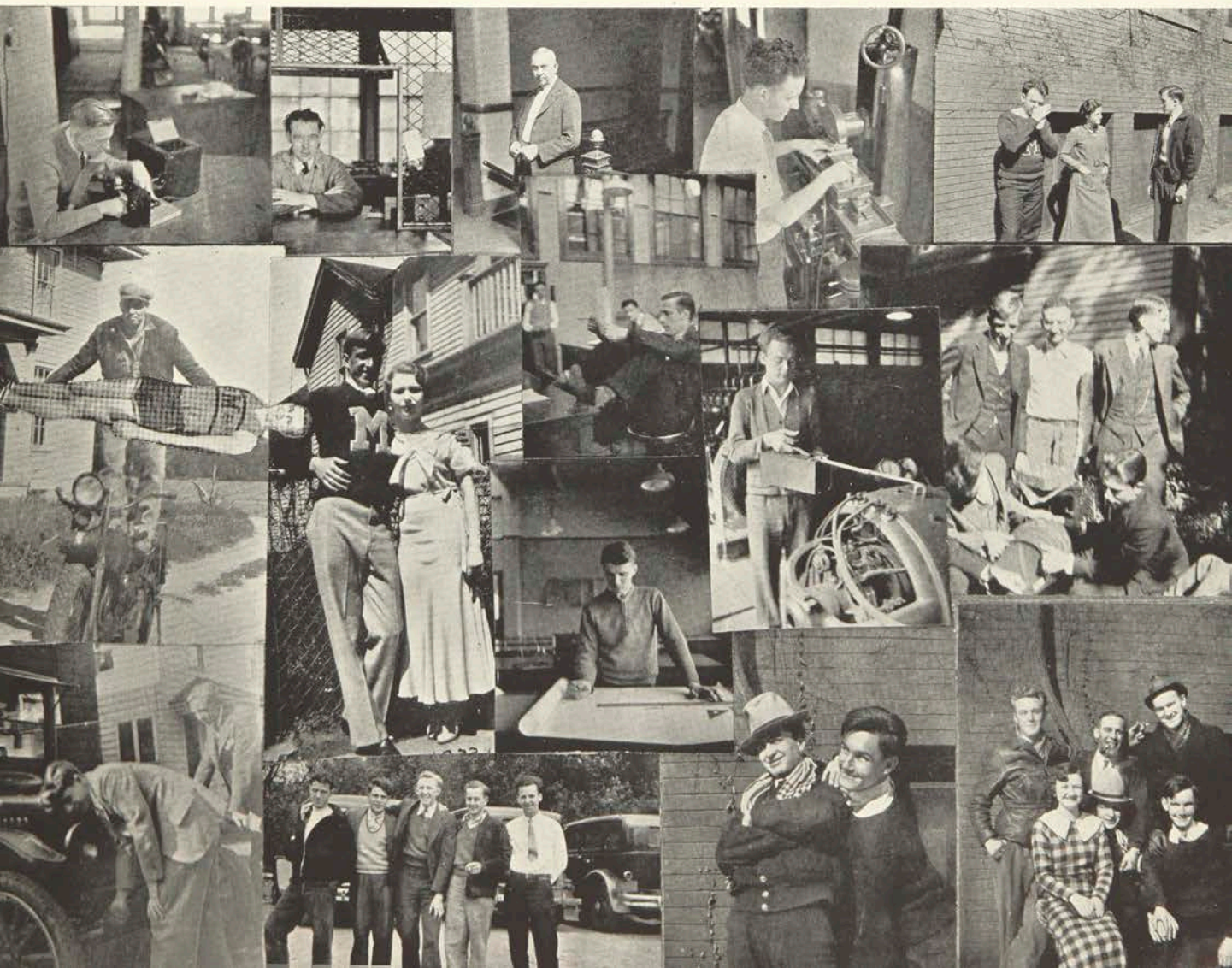
WILLARD ZINKE

114 Bedford St., Rochester

Executive Council (1); Student
Council (2); M. S. A. (1, 2, 3);
Initiation Committee (2); Psi-
mar Technical Editor (1, 2);
RAMIKIN Business Manager (2);
Editor-in-Chief (3); Dramatic
Club (3).



MECHANICAL ●





ROGER CECCONI
39 Irondequoit St., Rochester
Camera Club (1, 2).

RICHARD K. DEAN
Warrensburg, N.Y.
Chi Beta Kappa; Fraternity (2);
Camera Club (1); Vice-Pres.
Camera Club (2); Glee Club (2).



MAURICE FOSTER
Detroit, Michigan
Mica Club (1); Cheer-Leader (1);
Glee Club (1); Psimar (1, 2);
Camera Club (2).

WILLIAM H. HAGER
Dalton, Massachusetts
Camera Club (1, 2); Wrestling
(1).



STAN HILL
Rochester
Chi Delta Phi; Wrestling (1);
Treasurer of Chi Delta Phi (2);
Glee Club (1).

THERON T. HOLDEN
Honeoye Falls, N. Y.
Pres. Camera Club (2).



JAROSLAV KASAN
Binghamton, N. Y.
Wrestling (1, 2); Camera Club
(1); Treas. (2).

EDWARD KELLEY
Norwich, N.Y.
Mica Club (1); Psimar (1);
Secretary Camera Club (2);
Co-Editor Psimar (2).



HAROLD P. KENT
Binghamton, N. Y.
Phi Sigma Phi; Frosh Manager,
Wrestling (1); Glee Club (1);
Vice-Pres. (2); Fraternity (1);
President (2); Psimar-Sports
Editor (1, 2); Camera Club (1,
2); Student Council Representa-
tive of Fraternity (2); Inter-
Fraternal Council (2); Inter-
Fraternal Basketball (1, 2);
Dramatic Club (1).

SHERMAN W. MERLING
Kansas City, Mo.
Glee Club (2); Camera Club
(2); RAMIKIN Photographer
(1, 2).



HELEN T. ROWE
582 Main St., Lewiston, Maine
Bowling (1, 2); Glee Club (1,
2); Vice-Pres. (2); Camera Club
(2); RAMIKIN Photographic
Editor (2).

STEPHEN K. SILLAY
Tallapoosa, Ga.
Mica Club (1); Glee Club (1);
Wrestling (1); Camera Club
(2).

DAVID W. SIME

Buffalo, N. Y.

Chi Beta Kappa; President of Fraternity (2); Co-Sports Editor Psimar (2); Camera Club (2); Salon Representative Mica Club (1); Inter-Fraternal Council (2); Frosh Basketball (1); Chairman Frosh Snowball Dance.

EARL R. WALLACE

Conifer, N. Y.

Chi Beta Kappa; Glee Club (1, 2); President Glee Club (2); Psimar Advertising (1, 2); Dramatic Club (1); Camera Club (2, 3); Mica Club (1).



PHOTO TECHNOLOGY ●



R
E
T
A
I
L

D
I
S
T
R
I
B
U
T
I
O
N



HAROLD CHAPIN
86 Troop Street
Port Allegheny, Pa.
Retail Bulletin (2, 3); Retailing
Association (1, 2, 3).

VIRGINIA CLARKE
Rochester
Sorority (1, 2, 3); Inter-Soro-
rity (1); Retail Bulletin (1, 2).



EUNICE DIBBLE
Canandaigua, N. Y.
Phi Upsilon Phi.

MARJORIE ELLIS
Elmira, N. Y.
Sorority (1, 2, 3); Retailer
Association (1, 2, 3); Glee
Club (2, 3); Golf (1); Retail
Bulletin (3).



GLADYS GLIDDEN
Rochester
Sorority (1, 2, 3); Inter-Soro-
rity Council (3).

FLORENCE HOWE
Rochester
Sorority (1, 2, 3).



LILLIAN DORIS KAHN
78 Shepard Street
Retail Association (1, 2, 3);
G. A. A. (1, 2, 3); Bowling (3).

FUKU MATSUOKA
Yokohama, Japan
Golf (1, 2, 3); Glee Club (1,
2); Swimming (2, 3); Art
League (3).



ALEXANDER V. McEVOY
68 Prospect Ave.
Philmont, N. Y.
Retail Association (1, 2, 3);
Retail Bulletin, Business Man-
ager (2, 3).

J. ANNA MORRIS
Watkins Glen, N. Y.
Sigma Kappa Delta (2, 3).



MARJORIE OLMSTED
31 Gerfield St., Waverly, N. Y.
Phi Upsilon Phi; Glee Club (1,
2, 3); Retail Association (1, 3);
Inter-Sorority Representative
(3); Tap Dancing (3); Dormi-
tory Council (1); Bowling (3).

HESTER M. POLLEY
323 Broadway, Winona, Minn.
Phi Upsilon Phi; Glee Club (1,
2); Retail Bulletin (2); Retail
Association (2); General Coun-
cil (2, 3).

R
E
T
A
I
L
D
I
S
T
R
I
B
U
T
I
O
N

M. RANDALL

591 Stroudwater St.
Westbrook, Me.

Alpha Psi; Treasurer of Sorority (2); G. A. A. Council, Vice-Pres. (2); Basketball (1, 2); Bowling (1, 2, 3); Glee Club (1, 2, 3); Social Chairman, Junior Class (2).

MARY ELIZABETH RAU

419 Morris Avenue
Grand Rapids, Michigan

Delta Omicron; Retail Association (1, 2, 3); Retail Bulletin (1); Sorority (2); President (3); Dormitory Council (2); President (3); Student Executive Council (2, 3); Inter-Sorority Council (3).



LAWRENCE SACKETT

Caledonia, N. Y.

Retail Bulletin (1, 2, 3);
Retail Association (3).

LOUISE SAWTELLE

62 Murray St.
Binghamton, N. Y.

Alpha Psi; Corresponding Secretary (2); Secretary (3); Dormitory Council; Secretary and Treasurer (3); Retail Bulletin (3); Retail Association (1, 2, 3); Glee Club (1, 3).



VIRGINIA SCHUYLER

615 Flower City Park, Rochester

Treasurer of Retail Association (2); Riding (1).

BERTHA SHERMAN

Rush, N. Y.

Alpha Psi (1, 2, 3); Vice-Pres. (3); G. A. A. President (3).



GRACE SIMPSON

Rochester

Retail Association (1, 2, 3); Phi Epsilon Phi (1, 2, 3); Correspondent Secretary (2); President (3); Inter-Sorority Council Pres. (3).

LeROY M. SLOCUM, III

Scottsville N. Y.

Band (1, 2, 3); Retailing Association (1, 2, 3); Retail Bulletin (2, 3); Circulation Manager Retail Bulletin (3).



ALBERTA WIGNALL

Fairport, N. Y.

Sigma Kappa Delta (1, 2, 3);
President (3).

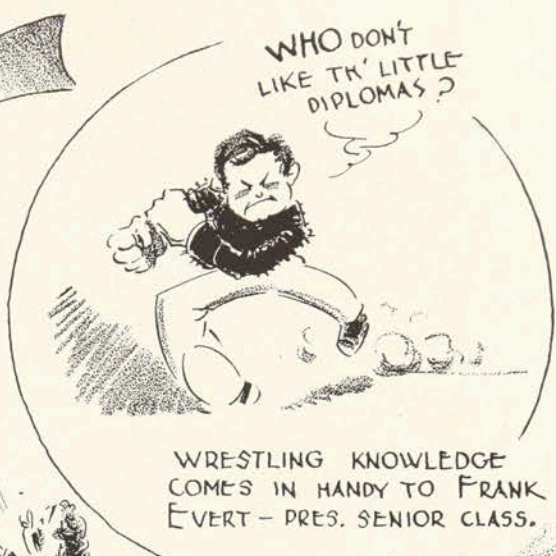


R
E
T
A
I
L

D
I
S
T
R
I
B
U
T
I
O
N



WILLARD ZINKE—EDITOR-IN-CHIEF OF THE YEAR BOOK—DID A FINE JOB. DON'T YOU "ZINKE" DID?

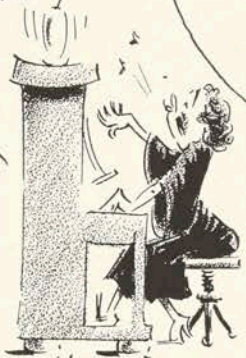


WHO DON'T LIKE TH' LITTLE DIPLOMAS?

WRESTLING KNOWLEDGE COMES IN HANDY TO FRANK EVERT—PRES. SENIOR CLASS.

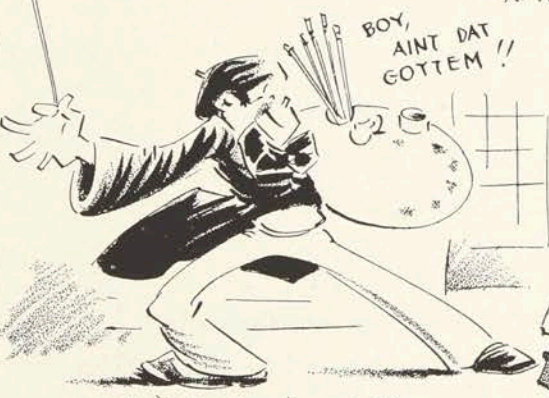


"JIMMIE LEES ISN'T TH' 'LEES' BIT BASHFUL WHEN IT COMES T' WOMEN.



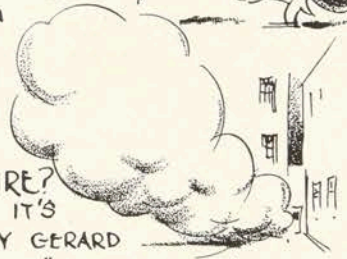
HELEN FRANKLIN—PRES. STUDENT COUNCIL—AFTER BREAKFAST IN TH' DORM.

"DOT" HISCOCK CO-EDITOR, PSIMAR.

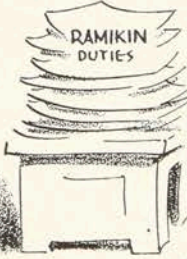


BOY, AINT DAT GOTTEM !!

FIRE? NO, IT'S ONLY GERARD "PICKLES" DILL ON TH' BACK END OF A 'STOGIE.



HOLY CATS!



CONNIE PRIDGEN—OUR SUTHIN' FREN' FROM NAWTH C'LINA SHAKES A MEAN PAINT BRUSH.

BERNIE "RUMBUTIS" BUS. MGR., YEAR BOOK, HAD HIS TROUBLE'S TOO.



ED WHITE

CLASS HISTORY

Well, folks, here we are—Freshmen! Our first week we spend wandering aimlessly about, getting acquainted with our new surroundings, and trying to find just where to go next, and why. Trying to find room 999 takes another week, but we only find there is no such room in the whole Institute. We are dreading initiation, and wonder just what is about to happen to us. Perhaps we will be required to walk up Main Street on all fours, to push peanuts to classes with our noses, or any one of those playful little things upper-classmen are so likely to request of us. But the initiation is not so bad, after all. And then there is the Student Reception, "for the sole purpose of getting acquainted." We suppose we had better attend, but do not particularly relish the thought of being thoroughly looked over by the faculty and student body. But we go, and much to our surprise, we like it. We leave, very much enlightened, for we have met people well worth knowing and having as friends. We become better acquainted with members of our own class at a Freshmen dance held in the Bevier Building. So ends the first chapter of our life at Mechanics.

The second year we come back self-assured and proud that we are no longer the "babes of the Institute." We miss the Seniors of last year but look forward to knowing the little Freshmen who have just entered. Having outgrown a great share of our timidity, we participate whole-heartedly in student activities. The Junior Prom is something we have looked forward to for a long time, and proves to be great fun.

Seniors at last! Lords and masters over all. But in spite of our superiority we are just the same old folks that entered two short years ago. Signing our names to Freshmen notebooks is making us late to more than one class this Fall. It is a great idea for getting acquainted, and we hope it will become traditional. But the joke is on us, not the Freshman. They hold the notebooks, and we do the signing.

This is the busiest year of all for every one of us. The Senior Banquet is a howling success. When we say howling we refer to the class prophecies. And to close our glorious three years at the Athenaeum we have the Senior Ball—a social triumph.

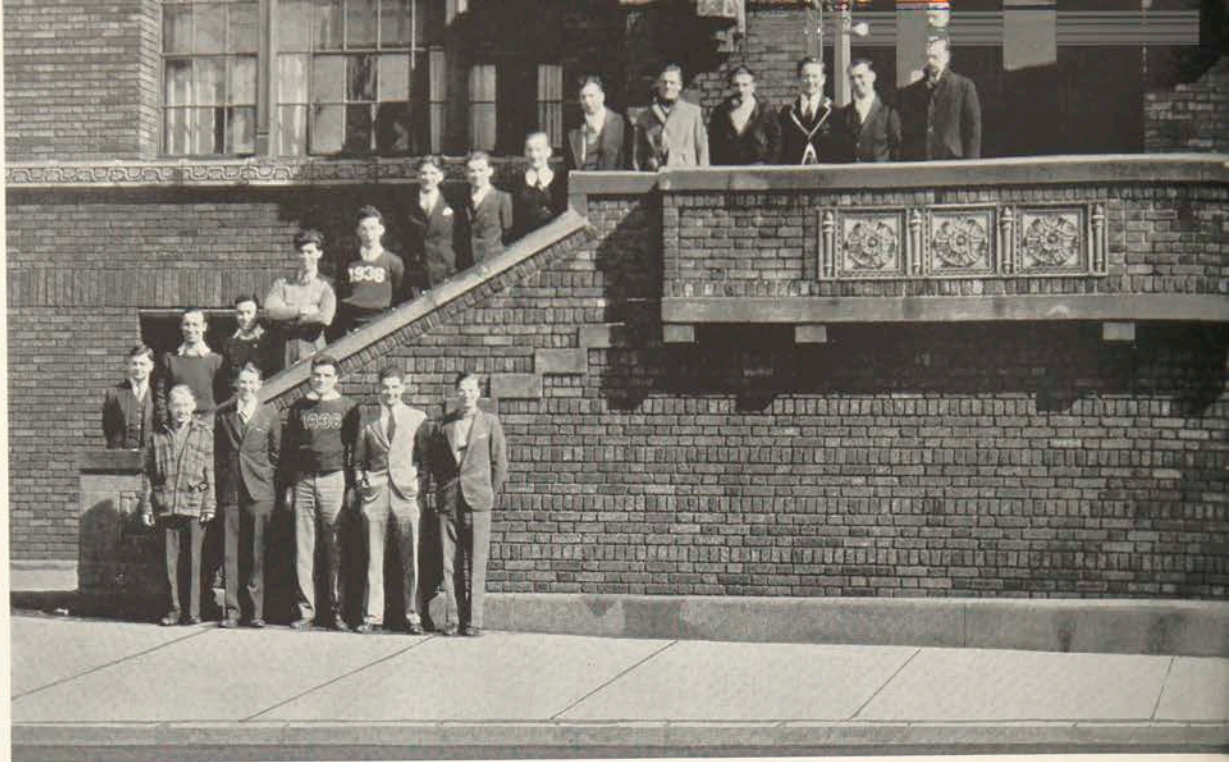
All of us look forward to days full of the same happiness and success we have enjoyed here at Mechanics, for we have gained one of the most priceless assets of our lives during our three years here.



Smith, Park, Reamer

JUNIOR OFFICERS

MARIAN REAMER	<i>President</i> ●
DONALD LOCKWOOD	<i>Vice-President</i>
GEORGE SMITH	<i>Treasurer</i>
THOMAS PARK	<i>Secretary</i>



Back Row: Standing, left to right, Hickok, Dennison, King, Donovan, Dense, Whitmeyer, Smith, Arnold, Mitchell, Hazelton, Siegel, Walzer, Pringle, Wescott
Standing in Front of Steps: left to right, Burkhard, Kendall, Fox, Wolverton, Parks

JUNIOR CLASS

Adams, Philip L.
 Anderson, Wm. John
 Armes, Leone H.
 Armstrong, Florence A.
 Arnold, John W.
 Avery, Hester R.
 Baker, Carol D.
 Barnum, Granville F.
 Bartlett, Wilham S.
 Bennett, Grace E.
 Bingham, Harriet L.
 Bishop, Donald L.
 Braley, Rolland E.
 Brandt, Eva C.
 Burkhard, Joseph L.
 Burkhard, Lynn M.
 Burtis, Marion J.
 Bush, Gordon
 Caplin, Harvey H.
 Carman, Kathleen
 Carroll, Ronald S.
 Clark, Adelaide J.
 Clement, Geo. H.
 Costello, Virginia
 Coverdale, Ruth M.
 Crane, Edith L.
 Crocker, Edna L.

Daley, Albert J.
 Davis, Chas. S.
 Denison, Alon C.
 Dense, Jack C.
 Dibble, Carl H.
 DiSchino, Salvatore F.
 Domine, Ellenore
 Donovan, Clark
 Divorsky, Sam S.
 Earls, John E.
 Elliot, Geo. W.
 Enders, Alice M.
 Estes, Raymond L.
 Fairbairn, Claudia
 Ferris, Chas. J.
 Fletcher, Erwin F.
 Fox, Edwin. C.
 Frolich, Pauline R.
 Furman, Alice R.
 Gervey, Catherine D.
 Giles, Mary Ellen
 Gruber, Norein M.
 Gustafson, Ruth E.
 Hall, Arthur W.
 Hall, James W.
 Hanson, Jeanette A.
 Harrison, Nina M.

Hart, Marguerite J.
 Hazelton, Wm. P.
 Heath, Harold E.
 Henderson, Edward B.
 Henderson, Rose, L.
 Hennick, Edwin O.
 Herbison, Donald W.
 Hickey, Chadbourne V.
 Hickok, Walter
 Hill, Wm. H.
 Honiss, Helen H.
 Hulbert, Donald N.
 Hutton, Wm. F.
 Iggleden, Margaret L.
 Jackson, Guy E.
 Janus, Edward F.
 Jenkins, Priscilla S.
 Johnson, L. Grace
 Johnson, Marion R.
 Jordan, John W.
 Kendall, Addison
 Kendall, Gordon H.
 King, Clark L.
 Knapp, Jeannie J.
 Knudsen, Gloria M.
 Kingsley, Dorothy
 Klenke, Frances C.
 Koon, Rhoda M.



*Back Row: Standing, left to right, Merritt, Dill, Rumont, Lester, Armstrong, Bennett, Pierce, Bartlett, Crocker, Johnson, Urquart, Williams, Furness, Meade, Turnbull, Sackett, Fairbairn, Bingbam, McMahon, Gruber, Knudsen.
Standing in Front of Steps: left to right, Strause, Frolich, Reamer, Domine, Palmer, Anderson, Shingle, Enders, Jiles, Sinclair, Henderson, Whitmeyer, Jordan, Caplan, Jenkins*

JUNIOR CLASS

Lake, Elton B.
 Leary, James M.
 Lee, Howard M.
 Lester, Frances M.
 Lockwood, Raymond
 Logan, Geo. V.
 McKay, Kathleen E.
 McMahon, Jeanne F.
 McShea, Frances
 Marquart, Ruth B.
 Marsh, Katherine P.
 Martin, Lois
 Mattison, E. Venette
 Mauck, W. Mahlon
 Meade, Eleanor M.
 Meinecke, Ruth C.
 Mitchell, Harold S.
 Moore, Martha Bruce
 Morlante, Alfred J.
 Munson, Smith
 Naber, Kenneth G.
 Nelson, Beatrice H.
 Ownes, Chas. H.
 Owen, Harry J.
 Palmer, Elizabeth G.
 Parks, Thomas F.
 Parker, Ralph H.

Parmelee, Verna H.
 Persons, Ellen E.
 Pierce, Joseph E.
 Pierce, Phyllis A.
 Pringle, Edmund J.
 Quinlan, Ralph W.
 Randall, Wilma N.
 Reamer, Marian E.
 Rehbein, Evelyn
 Rikes, Maylon F.
 Ritchie, Alice M.
 Robbins, Ella N.
 Robinson, Alfred B.
 Rumont, Jennie C.
 Sackett, Rita M.
 Schiliro, Anthony
 Scott, Jane S.
 Shingle, Margaret E.
 Sigel, Frederic J.
 Sillay, Fred J.
 Sinclair, Arthur N.
 Slocum, Emily D.
 Smith, Geo. E.
 Smith, Howard E.
 Sterling, Gertrude
 Stewart, Mayalene

Strouse, Edna L.
 Taber, Joseph H.
 Taylor, Ruth A.
 Thacher, Elizabeth B.
 Tiernan, Thomas J.
 Todd, Robert W.
 Turnbull, E. Jane
 Turtle, Georgiana, R.
 Urquhart, Gladys B.
 VanInwegen, Geo. B.
 VanVechten, Chas. H.
 Walter, Emil F.
 Walzer, Donald, M.
 Wardner, R. Eleanor
 Webster, Lawrence J.
 Wescott, Jr. Geo. A.
 Weterings, Frans J.
 Weider, John M.
 Welch, Jerold L.
 Wigton, Lester E.
 Williams, Muriel L.
 Wilton, Dick R.
 Witmeyer, Stanley H.
 Woburton, C. Edward
 Wood, Elinore R.
 Wood, Edwin F.

CLASS HISTORY

As Frosh, our entrance into Mechanics Institute in the fall of '33 was identical with the entrance of any of the other classes. Therewith the identity ceased. Upperclassmen were quick to sense the fact that we were an extraordinary group of Frosh when we pulled the several representatives of the class of '35 through the frigid waters of Red Creek—the culmination of our initiation.

While maintaining a meritorious scholastic standing in our studies, we found time to present two social functions of note—the "Frosh Mixer," at which everyone made innumerable acquaintances and had a real good time, and the "Frosh Snowball Dance" held in the Pompeian Room of the Seneca Hotel—as smart an affair as any Frosh class had ever given.

Fraternities and Sororities congratulated themselves upon pledging a majority of our number. Athletic teams, technical societies, and the other extra curricular organizations found our class increasing their membership, and giving them untold support.

As Juniors, we have continued to hold high our enthusiasm and interest in those things which our Alma Mater has to offer, both in the classroom and without. The incomparable smoothness of our "Junior Prom," held in the beautiful ballroom of the Powers Hotel—featuring the enchanting music of Bennie Griffin's Southernaires, was the highlight of M. I.'s social season. The records of Juniors as members of the Wrestling and Basketball squads—especially the latter, have been outstanding. They have contributed greatly to a season of comparative successful athletic competition.

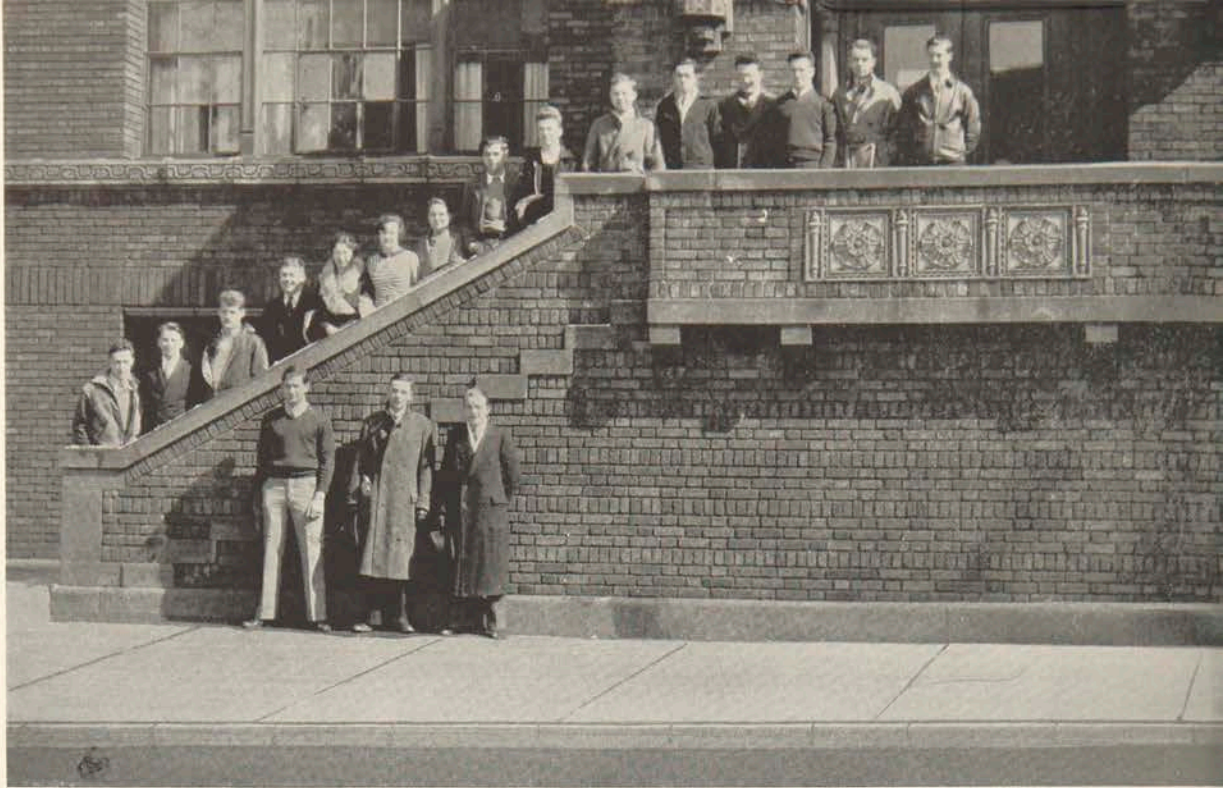
The time is drawing near when we shall be Seniors. As we look back over our record of the past two years we sincerely hope that we shall be able to uphold and, in some instances, better it—so that when graduation is reached we may feel; "R. A. M. I. is just a little better for our having been here."



Barkalow, Hettrick, Lebarren

FRESHMEN OFFICERS

JAMES BARKALOW	<i>President</i> ●
NORMAN VAN VLACK	<i>Vice-President</i>
ROBERT LEBARREN	<i>Treasurer</i>
OLIVE HETTRICK	<i>Secretary</i>



*Back Row: Standing, left to right, Messerschmitt, Lischer, Holtby, Van Zandt, Walls, Hetrick, Burnett, Williams, Sterling, Mabbett, Simmonds, Hallock, Miller, Thompson, Pike
Standing in Front of Steps: left to right, Henion, Thomas, Stone*

FRESHMAN CLASS

R. Alton	V. Brown	C. Edwards	C. Horn
H. Alt	W. Brown	M. Eidow	M. Howard
R. Amdursky	H. Brownell	M. Eisner	M. Howell
R. Anderson	J. Brule	M. Eider	L. Hubler
B. Anderson	J. Brydges	C. Evans	N. Huff
E. Appleyard	E. Burnett	R. Ferris	H. Iveson
R. Bailey	W. Burns	E. Field	J. Jennings
B. Baird	W. Carman	M. Fuller	H. Jones
B. Baker	D. Caplan	M. Gage	C. Jordon
H. Baker	B. Chalker	W. Garrett	E. Kane
G. Ball	B. Chamberlain	G. Gates	D. Kanter
J. Barkalow	B. Chapin	C. Geyer	M. Karle
R. Baumann	E. Clark	E. Gleason	H. Kellogg
E. Beale	A. Clarke	R. Grant	R. Keeney
C. Becker	G. Clive	D. Green	M. Kester
G. Benedict	J. Collens	O. Hallock	A. Keymel
L. Bennett	P. Colombo	K. Hartfelder	M. Kirkendall
R. Bennett	F. Conlin	M. Hender	F. Knowles
H. Belts	A. Davis	D. Hendryx	M. Krojawsky
G. Blarient	R. Denel	E. Henion	C. Kershue
E. Bock	H. DeZing	D. Herington	M. LaForce
J. Borland	H. Dudley	O. Hettrick	M. Lapp
C. Bowrey	G. Ebling	R. Hinehline	R. Lebaron
D. Boyce	A. Echter	F. Hoffer	W. Leckinger
M. Barannigan	M. Edgett	G. Hoffman	R. Leck
R. Britton	D. Edmunds	R. Hollby	F. Lefku



*Back Row: Standing, left to right, Field, Toomey, Herington, Jennings, Allen, Chalker, Ward, Woodley, Collins,
Barklow, Stork, Means, Wend, Paquin, Van Vleck
Standing in Front of Steps: left to right, Brown, Nielsen, Evans*

FRESHMAN CLASS

D. Lischer
G. Loysen
N. McCombs
A. Mabbett
H. Manning
H. Markham
I. Marotta
W. Marquardt
M. Means
F. Messerschmitt
I. Mettler
G. Michaelis
H. Miller
J. Miller
B. Moore
C. Moore
E. Moore
R. Morgan
G. Morton
H. Munson
B. Naylor
R. Nelson
H. Neivert
F. Neilson
J. O'Hara
H. Olsen

L. Orzechowska
M. Otto
H. Owens
C. Paquin
G. Parker
C. Perkins
E. Pike
R. Pike
R. Polak
J. Pownall
P. Priest
S. Prapatrick
M. Prytula
E. Purhenn
W. Pearwin
B. Reed
E. Reid
H. Resseque
M. Robinson
C. Roth
J. Rowley
V. Sandak
E. Sherer
V. Scherer
A. Schick
F. Scofield

A. Seel
V. Seagl
R. Seltz
F. Seymour
B. Shafer
E. Shaw
W. Shea
O. Sheremeta
P. Sheremeta
M. Simmons
S. Singer
P. Smith
E. Snyder
H. Spooner
S. Sterling
R. Stevens
R. Stone
C. Stork
H. Stolhard
J. Stroube
R. Stroube
J. Sullivan
J. Swanson
D. Terwilliger
H. Thomas
H. Thompson

N. Tilley
J. Toomey
V. Van Hynig
N. Van Vlack
D. Van Zandt
H. Wales
E. Walsh
O. Waltz
H. Ward
S. Waterman
J. Weldon
K. Wend
M. Whipple
N. Whitford
M. Williams
P. Williams
J. Wilson
E. Wolcott
P. Wolk
G. Wood
J. Wood
M. Woodley
M. Woods
M. Wright
G. Yager

CLASS HISTORY

We, the class of '37; made our first appearance at Mechanics Institute on September 10, 1934. Everyone was looking forward with anticipation to three years of intellectual and social achievements. It was very evident that the Freshman Class would add vim and vigor to the life of the school activities.

The year started with a welcome party for the Freshman to get them acquainted with the school celebrities. The upper classmen and Freshmen, together, enjoyed the dancing and refreshments.

The second week of school was a very exciting week for all Freshmen. The upper classmen became more friendly and insisted that the Freshmen be more courteous to them at all times. The Initiation Committees began issuing orders to the Freshmen. The Freshmen girls started to prepare for bad weather by carrying umbrellas, wearing mittens, and some of them were carrying their suitcases, ready to go home any moment. The fellows were decorated with large green buttons, bearing their names and numbers, bright green neckties, and wilted carrots.

Time drifted by and the Freshman Class officers were elected. They immediately began working on a plan for a "Freshmen Frolic." This was held on November ninth in Bevier Hall. Everyone attending had a very enjoyable evening.

Now came time for the Glee Club, educational societies, Dramatic Club, and athletics to begin their plans for the year. These activities took much of the Freshmen's time, so there was a lull in class activity. However, after the Thanksgiving recess, the fraternities started rushing the Freshmen boys—being especially hospitable to them. As a result of this, pledge pins were placed in the lapel of many a Freshman coat. The initiation began in a very delicate fashion with just small jobs to do, such as cleaning a Brother's apartment, washing dishes, and being very polite to every Brother.

The different sororities of the school held rush parties for the Freshmen girls. Every Freshman girl who attended one or more of these parties enjoyed them very much.

During the first part of the second semester, the Freshman history consists primarily of school activities. The Glee Club and the Dramatic Club had a large percentage of Freshmen in attendance. The Freshman Class had a good showing in all athletics. The Freshmen wrestling team showed a great promise for next years Varsity. The Varsity Basketball team had two first year men and the Freshmen team was composed of competent players that will be eligible for the Varsity next year. Many Freshmen girls have shown ability in all G. A. A. activities.

Now, that we have had a very successful year, we are eagerly looking forward to our Junior year, and with the continued cooperation of all members of the class, we are confident that we shall be even more successful in the future.

Book Two



INSTITUTE LIFE



GOVERNING
ORGANIZATIONS



Donovan, Scofield, Franklin, Slocum, Lees

STUDENT COUNCIL

OFFICERS OF THE EXECUTIVE COUNCIL

HELEN FRANKLIN, Applied Arts	<i>President</i>
JAMES LEES, Electrical	<i>Vice-President</i>
CLARK DONAVAN, Chemical	<i>Secretary</i>

The Student Council is composed of a group of representatives of the Student Body for the purpose of self-government and maintenance of high ideals, scholarship, and sportmanship.

Each year there are several important issues brought before the council for solution. During the past year, a careful survey of the representative system was compiled; noon dancing in the Eastman Assembly Hall was discontinued; a bookkeeping system suitable for all organizations' accounts was set up; the budget, the council's most important business of the year, was made out with several necessary cuts. However, the organizations deserve much credit for having continued satisfactorily under the handicap. The guest ticket plan worked very smoothly, and the spirit at the games was much more evident than it has been in previous years. Perhaps this is due to the interest of fraternities and the few pep-meets held before home games.

A new handbook is under way and will be ready for publication to the freshmen of '35-'36 with several changes and additions to the present curriculum, including an entirely new set-up of activities for both men and women on a basis similar to that of G. A. A.

This year's council was proud to accept "Gargoyles," a newly organized dramatic club having an enrollment of over 100 students and a year of conscientious work to back it. More power to them.



*Shingle, Jenkins, Chalker, Sterling, Rumont, Robinson, Slocum
Sherman, Proper, Urquhart, Anderson*

GIRLS ACTIVITIES ASSOCIATION

OFFICERS

BERTHA SHERMAN	<i>President</i>
JUNE KIMBALL	<i>Vice-President</i>
BETTY ANDERSON	<i>Secretary</i>
GLADYS URQUHART	<i>Treasurer</i>

The Girls Athletic Association was founded in 1922 to fill a long felt need for individual participation in sports. It was through Mrs. Gertude Meekan and a group of girls with earnest efforts which enabled them to organize this Athletic Association. Each activity was met with the heartiest support and cooperation. It gave the members an opportunity to become better acquainted and to show a friendly rivalry. The first event of the Association was a banquet given in honor of Mrs. Meekan. The athletics participated in were swimming, hockey, captain ball, basketball, riding, and hiking.

The Girls Athletic Association was changed to the Girls Activity Association because it not only included Athletics but the Glee Club was sponsored by the organization. The sports which G. A. A. sponsors now are those that it feels a student can continue to enjoy after school days, such as tennis, golf, swimming, and badminton.

The council is composed of the usual officers and the head of each sport is responsible for that activity throughout the year. The G. A. A. also has social functions which are open to the school. The annual banquet was one of the highlights of the year.

G. A. A. success in the future depends upon the support of its members, which should be the duty of every woman student at Mechanics Institute.



Proper, Sadlon, Rau, Sawtelle, Persens, Munson

DORMITORY COUNCIL

OFFICERS

MARY ELIZABETH RAU	<i>President</i>
LOUISE SAWTELLE	<i>Secretary</i>
CHRISTINE D. SADLON	<i>Senior Representative</i>
LOUISE SAWTELLE	<i>Senior Representative</i>
ELLEN PERSENS	<i>Junior Representative</i>
HARRIET MUNSON	<i>Freshman Representative</i>
MARGARET WILLIAMS	<i>Freshman Representative</i>

The Dormitory Council is made up of a group of five girls elected by the "Dorm Family" as representatives for each class. The government of the Dormitory is based upon consideration for all Dorm members.

The aim of this group is to promote firm friendship among the girls by the sponsoring of social functions. The most outstanding of these was the Dorm Formal held at the K. of C. and thoroughly enjoyed by all those attending. The Christmas Party was well attended and entertainment was provided by several groups of girls. An unusual new function took place this year—A Pet Show. Many different species were entered. Speaking of pets, the Dorm has added to its family a cat, named "Utah," who is quite familiar with the entire group including the parrot.

It is customary each year for the Dormitory to contribute food, clothing and other supplies to a needy family. Much interest was shown on the part of everyone doing this duty.

The success of the Dormitory largely depends upon the cooperation of the Council and the members of the family. It is the hope of this year's council that the on-coming officers will enjoy the success and pride that this year's Council had.



PUBLICATIONS



THE 1935

Willard Zinke
EDITOR-IN-CHIEF

WILLARD ZINKE	<i>Editor-in-Chief</i>
FLORENCE ARMSTRONG	<i>Assistant Editor</i>
MARY COOK	<i>Assistant Editor</i>
DOROTHY HISCOCK	<i>Assistant Editor</i>
NED WHITE	<i>Art Editor</i>
ARTHUR SINCLAIR	<i>Assistant Art Editor</i>
FRANS WETTERINGS	<i>Assistant Art Editor</i>
BERNARD RUMBUTIS	<i>Business Manager</i>
FRANKLIN EVERT	<i>Assistant Business Manager</i>
NOREIN GRUBER	<i>Staff Typist</i>
HELEN ROWE	<i>Photographic Editor</i>
HARRY MCCALL	<i>Assistant Photographic Editor</i>
SHERMAN MERLING	<i>Assistant Photographic Editor</i>
SHIRL BAILEY	<i>Advertising Manager</i>
LEONARD RIDYARD	<i>Advertising Manager</i>
NORMAN VAN VLACK	<i>Advertising Manager</i>

EDITORIAL STAFF

Zinke, Hiscock, Cook, Armstrong, Koch

BUSINESS STAFF

Gruber, Rumbutis, Evert, Villani



RAMIKIN

Bernard Rumbutis
BUSINESS MANAGER



RAMIKIN, the oldest publication at the Rochester Athenaeum and Mechanics Institute, has completed its twenty-fourth year of producing distinguished year books.

Through these years styles and fancies of dress, living, and art have constantly been changing, while truths and measurements of successes and happiness have not changed. During these years RAMIKIN has held fast to its purpose of setting each school year's history in its true color and at the same time the style of the book has changed from year to year to keep pace with new ideas in art, literature, and book building.

This year's staff has dedicated the book to Mr. J. Warren Gillon, perhaps the students' greatest friend and advisor. The staff is honored in being able to pay this tribute to a man it admires and has always considered its friend.

The staff wishes to take this opportunity to thank its new faculty advisor Mr. Horace Koch for his interest, enthusiasm, and advice in the production of this book.

ART STAFF

Hill, White, Westerings, Sinclair



PHOTOGRAPHIC STAFF

McCall, Merling, Rowe



MECHANICS INSTITUTE

PSI

PUBLISHED MONTHLY BY THE STUDENTS OF



CO-EDITOR-IN-CHIEF
Dorothy Hiscock

- | | |
|--------------------|--------------------------------------|
| DOROTHY A. HISCOCK | <i>Co-Editor</i> |
| EDWARD KELLEY | <i>Co-Editor</i> |
| MAURICE FOSTER | <i>Co-Editor</i> |
| LEONARD RIDYARD | <i>Associate Editor</i> |
| HARRIET HUTCHINSON | <i>Business Manager</i> |
| EVELYN TEUTE | <i>Art Editor</i> |
| RUDY POLAK | <i>Advertising Staff</i> |
| EARL WALLACE | <i>Advertising Staff</i> |
| BETTY ANDERSON | <i>G. A. A. and Dormitory Editor</i> |
| HAROLD KENT | <i>Sport Editor</i> |
| DAVID SIME | <i>Sport Editor</i> |
| VENA VAN HYNING | <i>Copy Editor</i> |
| JERRY WELCH | <i>Copy Editor</i> |
| OLIVE HETRICK | <i>Copy Editor</i> |
| JESSIE WILSON | <i>Circulation Manager</i> |
| ANTHONY SCHILIRO | <i>Circulation Manager</i> |
| NOREIN GRUBER | <i>Typist</i> |
| JOHN ARNOLD | <i>Features</i> |

REPORTERS

George VanInwagen Dean Fredericks

Maurice Foster Peter Terbuska
Harry Hill Frank Evert
Harriet Brownell Nathan Tilley
Katherine Wend Harvey Caplin
Charles VanVechten Stanley Witmeyer
Miss RUTH KITTREDGE *Faculty Advisor*

During the past year the Psimar Staff has learned the value of cooperation on the part of the Faculty, the entire Student Body, and members of the staff. It is to the combined efforts of these groups that the success of this year's Psimar is due.

The Staff has varied with each issue since so many of its members were on cooperative jobs and in school only alternate months. It has been necessary for the various people holding the same position on the paper to divide their work accordingly. This is the first year that both Co-Editors have not been in school throughout the two semesters since the Co-Editor arrangement has been put into practice, and it was necessary for them to adjust their work to this schedule.

It can be said that the Psimar has truly been a Student Publication of all of the Courses and Classes. The offices were well divided among the classes. The Seniors held those of Co-Editors, Assistant Editors, Business Manager, Art Editor, and Sport Editors. The Juniors filled positions as Copy Editors. The Freshmen were on the Advertising Staff, Copy Editors and Circulation Staff. The reporters were from all classes. The Psimar owes a great deal to the under-classmen for the help which they gave. The Freshman Class in particular should be congratulated on the number of its representatives who turned out for the meetings and contributed work.

The different courses were well represented with the Photo-Techs carry-

ing the honors. Edward Kelley, Co-Editor; Rudy Polak and Earl Wallace on the Advertising Staff; Betty Anderson, G. A. A. Editor; and Harold Kent and David Sime as Sport Sport Editors seem to furnish a predominating factor of Photo-Techs. The Food Course had Harriet Hutchinson as Business Manager, Vena Van Hynings as Copy Editor, Jessie Wilson as Circulation Manager, plus reporters Harriet Brownell and Kay Wend. Jerry Welch as Copy Editor and Anthony Schiliro as Circulation Manager represent the Mechanicals. The Art School offered Dorothy Hiscock as Co-Editor, Evelyn Teute as Art Editor, Norein Gruber as Typist and Reporters in Harry Hill, George Van Inwagen, Charles Van Vechten and Stanley Witmeyer. The Electricals consisted of Frank Evert and James Lees, Reporters; and the



*Polak, Hiscock
Wallace, Kittridge*

THE

M A R ROCHESTER, NEW YORK

ROCHESTER ATHENAEUM AND MECHANICS INSTITUTE

Chemicals of Leonard Ridyard as Assistant Editor. Maurice Foster of the Photo-Techs was Co-Editor until December when he was forced to resign because of a position in Chicago which prevented his continuing on the Staff. His place was taken by Dorothy Hiscock who had been Associate Editor.

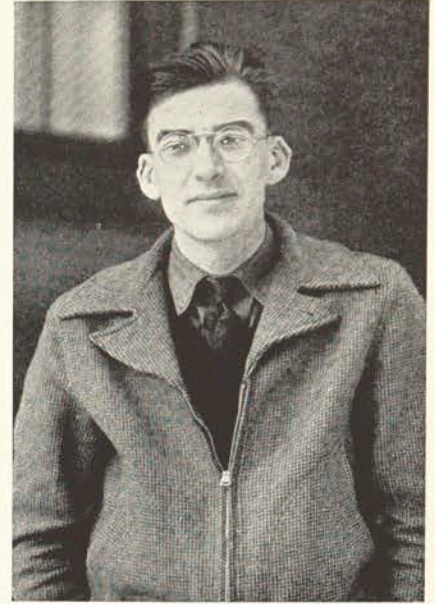
Psimar was especially fortunate in securing Miss Ruth Kittredge as Faculty Advisor. Miss Kittredge or "Kit," as she was known informally to the Staff, contributed not only her time and efforts to making this a successful year but also gave her enthusiasm.

It has been the policy of the Psimar this year to include in each issue all news of interest about the different courses and school activities. Space has been reserved each time for such organizations as Sororities, Fraternities, the Camera Club, the Dramatics Club, the

Electrical Students Association, the Mechanical Students Association, the Teams, Glee Club and the Mica Club. Beside these regular articles, features such as the Tattler, the Diary of a Dilledante, and Rope Yarns were included. The Tattler made up of personal items contributed by members of all classes was compiled by an individual whose identity was supposed to be unknown to the students. The Diary of a Dilledante by Charles Van Vechten and George Van Inwagen was primarily an Art School production of the adventures of some student from that section plus a liberal amount of imagination. Rope Yarns by Harry Hill, a series of articles based on his experiences on board an oil tanker during 1933 and 1934, were included at intervals. Other articles pertaining to special subjects of interest such as the policies of Student Council toward Sports for next year were included. During the sport season the paper devoted most of its space to that subject. Articles about the individual players, the games played, and the wrestling meets with the various scores were featured. Two issues the February 2 and the March 1 ones were sold at the games in the K. of C. Hall.

Variety in color has been created at various times by changing the usual policy of black type on white paper. The December issue, which came out just before Christmas, was printed in green type with red and green illustrations on white paper. The March 1st issue, which was the last sport issue, was printed in black on pink paper. The illustrations this year with one exception have been linoleum block prints cut by Evelyn Teute, Harry Hill, and Helen Franklin.

The block prints were continued



CO-EDITOR-IN-CHIEF
W. Edward Kelley

from last year and they have the effect of making the paper entirely a student publication, since all articles and illustrations are the work of the students themselves.

The last issue with its summary of the year's important events came out on March 28th, with every available inch of space filled. Each organization had taken the opportunity of announcing the awards given to its members, and the new officers for the next year.

It is impossible to thank each individual separately, but the Psimar Staff of 1934-1935 at this time would like to express its appreciation to its Faculty Advisor, the other members of the Faculty, and the Student Body as a whole for their cooperation and help during the past year. To the new officers for next year's Psimar we wish a most successful year with the pleasantest of memories.



*Teute, Ridgard
Wilson, Sines*

STAFF



O'Hara, Chamberlain, Britton, Iggleden, Sawtelle
Slocum, Gustafson, Cunningham, McEvoy

RETAIL BULLETIN

The Retail Bulletin, a publication which is put out by members of the retailing classes, has made marked progress during the last year. It stimulates interest among those in this vocational field and its contents deal with problems of retail interest.

ROSE HENDERSON	Editor-in-Chief
RUTH CUNNINGHAM	Faculty Advisor
ANNA MAY JOHNSTON	Faculty Advisor
GEORGIANA HATHAWAY	Faculty Advisor
HESTER AVERY	Assistant Editor
ALEXANDER MCEVOY	Business Manager
LEROY SLOCUM	Circulation and Publicity
ELLENORE DOMINE	Art Editor
GLADYS URQUHART	Art Editor
PAULINE FROHLICH	Art Editor
MARGARET IGGLEDEN	Staff Typist
LILLIAN MANNING	Staff Typist

HANDBOOK

Each year the student Handbook is revised and published to acquaint students with the traditions, organizations, and the faculty of The Rochester Athenaeum. This book is not only intended for the information of the new students, but also for the notification of the upperclassmen of changes which have taken place during the year. With the aid of Mr. Mark Ellingson and Miss Ruth Cunningham, the staff has compiled a book which should prove convenient to all students.

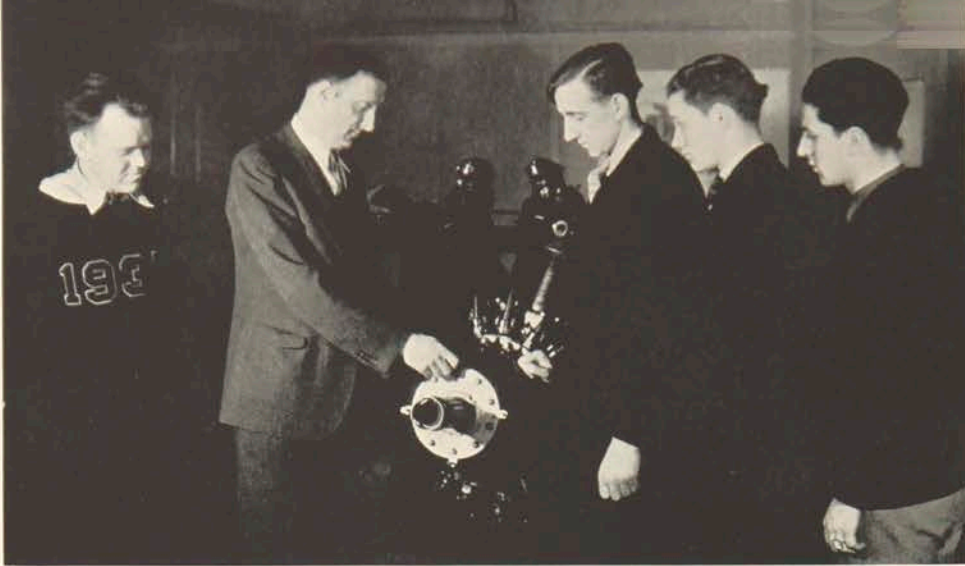
STAFF

MARGARET IGGLEDEN	Editor	LILLIAN MANNING	Typist
PAULINE FROHLICH	Associate Editor	BARBARA CHALKER	Typist
	Chalker
	Iggleden
	Cunningham
	Manning
	Frohblich





C L U B S



Van Steenburgh, Donaldson, Terbuska, Miller, Schilero

MECHANICAL STUDENTS' ASSOCIATION

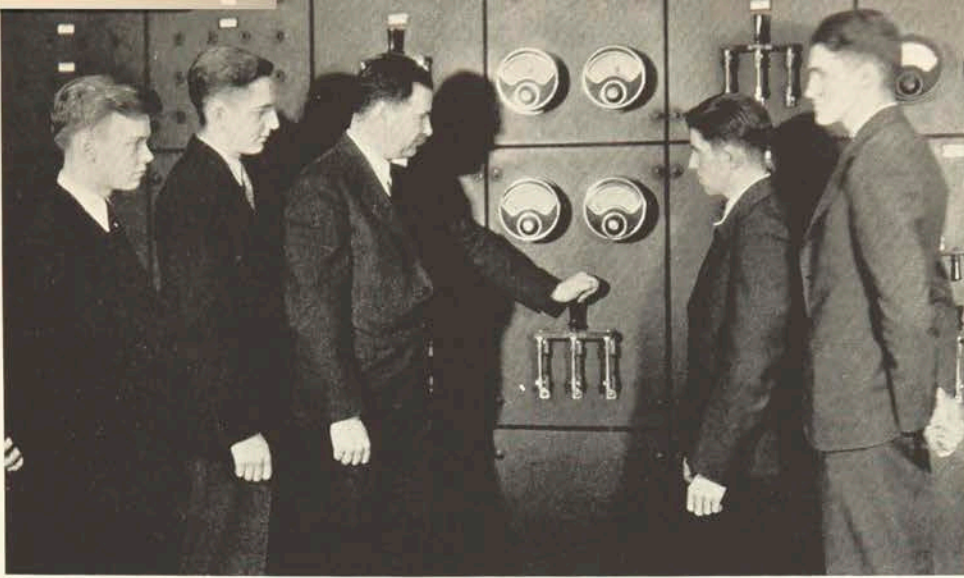
OFFICERS

PETER TERBUSKA	<i>President</i>
WILSON VAN DUSEN	<i>Vice-President</i>
ANTHONY SCHILERO	<i>Secretary</i>
HAROLD MILLER	<i>Treasurer</i>
MR. DONALDSON	<i>Faculty Advisor</i>

The Mechanical Students' Association was organized in the year 1925 for the purpose of developing good fellowship among the students of the Mechanical Department. The continued success of the association shows that it has achieved this purpose. The Mechanical Association has broadened the students Engineering outlook by providing them with interesting motion pictures, trips through industrial plants, and outstanding speakers. Col. Carry Brown, Superintendent of Maintenance at Kodak Park, spoke at the opening meeting.

The M. S. A. in conjunction with their regular monthly meetings held several afternoon discussions, at which specialists on gasolines, ball bearings, and oils were heard. This year past, on November 17, 1934, the Mechanical Students had an opportunity to study Marine Diesel Engines in operation when they were the guests of the government aboard the U. S. Coast Guard Cutter "Eagle" for a cruise on Lake Ontario.

On Thursday, November 7, the M. S. A. treated the student body to a real old fashioned "Nickelodian Night." "Westbound Limited," the feature attraction, thrilled the capacity audience from start to finish. It is hoped that "Nickelodian Night" will be made an annual function of the M. S. A. The successful season was brought to a most fitting climax by the annual M. S. A.—E. S. A. Banquet.



Turverey, Dimpfl, Morecock, Smith, Newton

ELECTRICAL STUDENTS' ASSOCIATION

OFFICERS

R. DIMPFL	<i>President</i>
A. NEWTON	<i>Vice-President</i>
A. SMITH	<i>Secretary</i>
G. TURVEREY	<i>Treasurer</i>
MR. MORECOCK	<i>Faculty Advisor</i>

In order to broaden the electrical students' education through subjects not ordinarily within the scope of the school course, the electrical students of Mechanic Institute organized the Electrical Students Association. The purpose of this organization is twofold: first, to promote technical interests; and second, to offer fellowship and social activities to the students.

The first purpose was fulfilled by securing prominent engineers as speakers who brought before the students some of the problems and situations which confront the engineer. When engineers speak to the E. S. A. they are able to see the student in a state of progressive training. For this reason they are better able to help a student "find himself" and to better establish his place in industry. By the discussions which follow the meetings, the student acquaints himself with conditions as they actually are, thereby making him a more competent engineer.

A combined picnic with the Mechanical Students' Association and the construction supervision students at Ellison Park, a combined banquet with the M. S. A., and get-togethers after each meeting contributed to the fulfilling of the second purpose of the organization. At these activities student fellowship was promoted and many lasting friendships were formed.

This past year was marked by very close relation between the M. S. A. and E. S. A. and it is hoped that this feeling of good fellowship will continue to grow and to extend among all professional organizations.



Scofield, Robinson, Anderson, Franklin, Horn, Sinclair, Van Ingwagen, Echter, Armstrong, Slocum, Weldon, Van Vechten, Bond, Witmeyer, Baker, Hickey, Hesselink, Dill, Jordan, Hill, Fairbairn, Gruber, Geyer, Sackett, Bingham Cogswell, Brown

ART STUDENTS' LEAGUE

OFFICERS

HARRIET BINGHAM	<i>President</i>
HARRY HILL	<i>Vice-President</i>
ARTHUR SINCLAIR	<i>Secretary-Treasurer</i>
RITA SACKETT	<i>Social Chairman</i>
STANLEY WITMEYER	<i>Student Council Representative</i>
MR. MILTON BOND	<i>Faculty Advisor</i>

One of the oldest of the active student organizations of Mechanics Institute is the Art Students' League. The League was founded in 1900 to increase the bonds of friendship among its members and to stimulate and further artistic development.

During this past year the Art League has been ably guided by one of the most active presidents it has ever had—Miss Harriet Bingham. The freshman initiation was conducted with much fun for the upperclassmen at the expense of the incoming members. In early October the annual fall sketching trip to Powder Mill Park took place and the future artists made many excellent sketches which were later placed on exhibit. The regular monthly meetings presented many outstanding and excellent speakers who addressed the students on art and on the allied professions in relation to art. These meetings were followed by social affairs among which were the revival of the old-fashioned box social and a cabaret party.

In addition to the monthly meetings the regular Tuesday evening sketching meetings were continued. Models in varied costumes made these meetings especially interesting. The season of activity was brought to a fitting close by the Art Students' League Spring Dance.



Rumont, Sadlon, Roberts, Shingle

SURVEY CLUB

The founders of the Survey Club appreciated the need for an organization to unite more closely the members of the various sections of the Food Administration Course. They knew that greater interest in the school work could be stimulated with informal discussions and the hearing of food authorities from outside the school. Consequently, in 1928 they organized the Survey Club.

The program during the past year was so varied and interesting that the club members found ample justification for attending all meetings. Speakers of prominence were brought from all parts of the city and state, and their topics were so selected as to cover most of the branches of the Food Administration field. Discussions at the meetings, however, were not entirely technical. Books, current events, travels, and so on formed much of the material for exchanges of thought. Parties and winter sports helped to round out the program of the year.

The Fall "Get-Acquainted Party" for new students was in the form of a buffet supper at Miss Benedict's home. Needless to say, it was greatly enjoyed by all present. The annual Christmas party was another enjoyable function. Entertainment for that evening was in the form of a one-act comedy entitled, "At The Movies," and presented by the Dramatics Club.

To the faculty of the department is due much of the credit for the success of the Survey Club. Their strong support and cooperation has helped the officers to carry on the work of the organization. It is hoped that the club will meet with continued success in the future years.



Munson, Benedict, Dudley, Jones, Chalker, Edgert, Howard, Echter, Robinson, Williams
Casad, Geyer, Jenkins, Rowe, Wilson, Van Steenberg, Kente

GLEE CLUB

MEN'S	OFFICERS	WOMEN'S
EARL WALLACE	<i>President</i>	PRICILLA JENKINS
HAROLD KENT	<i>Vice-President</i>	HELEN ROWE
BERNARD GEYER	<i>Secretary</i>	JESSICA WILSON
JOHN W. JORDAN	<i>Treasurer</i>	MAUDE DIETRICK
ERNEST VAN STEENBURGH	<i>Librarian</i>	PEGGY WHIPPLE

OFFICERS FOR 1935-36

HOUGHTON STEVENS	<i>President</i>
BARBARA CHALKER	<i>Vice-President</i>
JESSICA WILSON	<i>Secretary</i>
LAWRENCE WEBSTER	<i>Treasurer</i>
MARY ROBINSON	<i>Publicity Director</i>

This concludes the fourth year of the present organization of the Mechanics Institute Glee Club. Two separate organizations known as the Men's Glee Club and the Girls' Glee Club were formed in 1926. These were later consolidated in 1932 under the present name of "The Glee Clubs of Mechanics Institute" which is supervised by the Student Council.

With a single exception the Glee Club is the only extra-curricular activity in which both the men and the women of the Institute may participate. Each fall the bulletin

Helena Alt
Elizabeth Appleyard
Leone Armes
Florence Armstrong
Grace Benedict
Jean Britton
Harriet Brownell
Evelyn Burnett
Marion Burtis
Mary Brannigan
Leonard Blair
Elizabeth Betts
Elizabeth Clark

Howard Clark
Mary Cook
Lawrence Corwin
Ruth Coverdale
Barbara Chamberlain
Barbara Chalker
Gertude Cline
Helen Collins
Alice Dibble
Maude Dietrick
Robert Dimple
Clark Donovan
Helen Dudley

Gertrude Ebling
Alice Echter
Mary Edgett
Margery Ellis
Claudia Fairbairn
Neva Fenton
Helen Franklin
Pauline Frohlick
Catherine Garvey
Bernard Geyer
Lucille Hartwig
Edgar Hazard
Dorothy Hendryx

Olive Hettrick
Dorothy Hiscock
Claire Horn
Robert Howard
Louise Hubler
Donald Hulbert
Margery Howard
Helen Ivison
Priscilla Jenkins
Lucille Jones
John W. Jordon
Dorothy Kanter
Marion Karle



*VanHying, Keeney, Moore, Lischer, Blair, Clark, Merling, Webster, Scherer, Ward, Brownell
Hetrick, Ellis, Dibble, Hubler, Collins, Quinn, Lingle*

GLEE CLUB

boards are eagerly watched for notice of the first meeting, for undoubtedly the Glee Club is one of the most popular and successful activities of the school.

The program for the year consists of weekly rehearsals with an occasional evening of dancing. As a grand finale a Spring Concert is presented in March when proud parents and friends may listen to a program of semi-popular and classical selections. This year, however, a dance was held in the Bevier Hall to which all members and their friends were invited.

The last year witnessed two changes in the administrative organization of the Glee Club. Miss Ruth Cunningham who had been the faculty advisor for the past two years regretfully resigned. The high standard of the Glee Club has been greatly due to her untiring efforts and the officers and members wish to take this opportunity to thank her for her services. Miss Lingle was requested to fill the vacancy and kindly consented. Her acceptance was greatly appreciated and she was warmly welcomed.

Beginning next year the system of duplicate officers will be discontinued and there will be but one individual for each office. The officers of this year decided that a more efficient governing body would thus be possible.

At this time the officers wish to thank Mr. Casad for his very competent directing and his lively interest in the organization. They also express their appreciation to Mrs. Quinn for her fine work as accompanist and to the many students and members of the faculty who have made possible the success of the Glee Club during the past year.

Harold Kent
Ava Keymel
Anna Kobel
Clara Kuehne
Ruth Keeney
Roberta Leek
Frances Lester
Donald Lischer
Ida Marotta
Ruth Meinecke
Sherman Merling
Ione Mettler
Grace Morton

Harriet Munson
Bernice Naylor
Rochel Nelson
Helen Oslon
Marjorie Olmstead
Jane O'Hara
George Pfenninger
J. Pownell
Alice Ritchie
Mary Robinson
Helen Rowe
Janet Rowley
Wendall Ryan

Vivian Scherer
Vella Segal
Leanore Strouse
Jane Sullivan
Houghton Stevens
Parker Hazelton
Evelyn Teute
Howard Thompson
Earl Trevett
Dorothy Terwilliger
E. R. Van Steenburgh
Norman Van Vlack
Vena Van Hying

Earl Wallace
Ellen Ward
Ruth Wardner
Lawrence Webster
Jerold Welch
Kay Wend
Peggy Whipple
Jessica Wilson
Margaret Woodley
Sylvia Waterman

LIFE

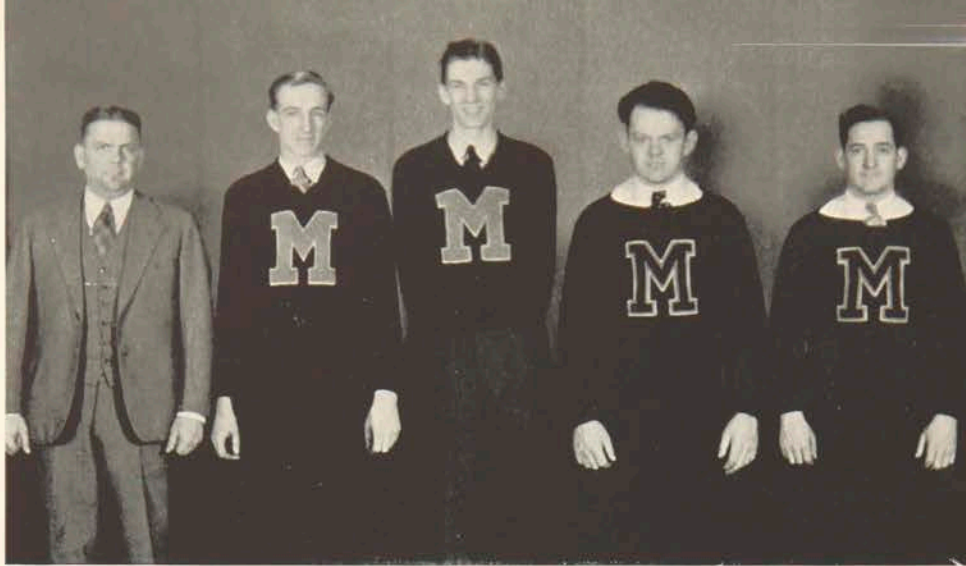
Youth leaves the life protected haven of home
When he enters manhood and college.
The world, accordion pleated, hides the consequences of each act
Beneath a promise—that pulled by too impatient fingers—
Reveals the wisdom of experience for a price.
To the youth one choice among these means fulfilment.

Age can not give to its young its own wisdom
Nor pay for them the price of living;
Each generation adds to the world's history
Its offering in the price of its own suffering—
And the world gives back in the value of that received.

DOROTHY HISCOCK



ATHLETICS



Hagberg, Terbuska, Witmeyer, VanSteenburgh, Morgan

M CLUB

MEMBERS

LEWIS MORGAN	<i>President</i>
PETER TERBUSKA	<i>Vice-President</i>
STANLEY WITMEYER	<i>Secretary and Treasurer</i>
ERNEST VAN STEENBURGH	<i>Faculty Advisor</i>
SHERMAN HAGBERG	<i>Faculty Advisor</i>

The "M" Club of Mechanics Institute was organized in the year 1929 by Mr. Charles Cala, and the lettermen of that year. It provides an organization for a more effective stimulation of Athletics and school spirit. The club, even though small this year, carries on the original purpose to help advance the different Athletic Activities for the men at Mechanics Institute, through heartily cooperating with the coaches and faculty managers of the various sports, and to see that the "M" is worn only by those who have earned this privilege.

The "M" Club consists of the men who have earned their award of an eight Block "M" for the required amount of participation in Institute meets. Basketball and wrestling are the two major sports at the Institute. The Club, therefore, consists of those men who have excelled in these two areas. At the beginning of the 1933-34 session of school the "M" Club, with the aid of the student council, was given full charge of initiating the Freshmen men students at Mechanics. The main purpose was to give the entering freshmen a more systematic initiation with carefully organized plans and regulations.



*Sherman Hagberg
Faculty Advisor*

CHEER-LEADERS

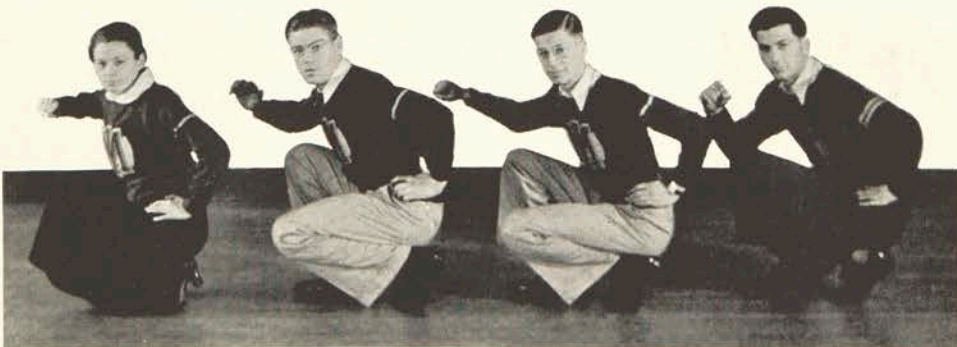
When Joe Volpe, Veteran cheer-leader, announced tryouts for the squad in the fall very few students responded. Those who did report were inexperienced. Practice was held three afternoons a week. A squad was picked namely, Volpe, Michaelis, Park and Kirkendall. The last named three, although inexperienced, showed an eagerness to learn—this plus Volpe's talented leadership gave "M. I." rooters a capable group of cheer-leaders when the Athletic season opened.

Throughout the schedule they carried on with an effervescent spirit, originality and a persistent plea to M. I. students to get behind the team—They saw to it that the huge crowd at the K. of C. observed the M. I. Sports Code—as a result our opponents went back to their various Alma Maters impressed with the Athenaeum's sportsmanship.

Through the efforts of the cheer-leaders every man on the various squads received recognition and encouragement through out the season. The members of the teams appreciated the work of the cheer-leaders this season—We wonder if the Student body fully appreciates the work of the cheer-leaders.

The seating arrangement at the K of C has not been conducive to organized cheering, yet competent leadership gave us that brand of cheering that makes an athlete strive to give his all for the Alma Mater.

Let us take the time right now to thank those whose spirited leadership inspired us to cheer Mechanics' teams to victory—A cheer for the cheer-leaders. Ready!—One-two-three— "Yea—— —Bo!!! Cheer-leaders."



Michaelis, Kirkendall, Park, Volpe



WRESTLING

While the 1934-35 wrestling season cannot be called a success when judged by its final scores alone, those on the "inside" feel that, considering its handicaps, the team did very well indeed.

Practice was started in October with only a medium sized group reporting, but after the usual few dropping out early, it proved to be a hardworking one. It was soon very evident that due to the limited representation in each weight class, the usual Reserve team would have to be omitted, leaving only the Varsity and Freshmen groups.

Because of the graduating of all varsity veterans excepting Captain Morgan, last year, the teams had to be composed of nearly all new material.

As the season progressed, several members were forced to retire from competition due to injuries. As the representation in their classes happened to be low, it made necessary the forfeiting of as high as ten points a meet.

There were only four regularly scheduled meets this season but matches were also held with Alfred and the Alumni teams. Unlike last year's trips to Cambridge and Cleveland, all this seasons meets were held at home.

Instead of stopping practice with the ending of the meets, the gym was kept open three nights a week to give those who will be here again next season and those who have recently become interested in the sport, extra practice.

Only three members of the varsity team are being lost through graduation this year, which should give us a good start toward a successful season next year.



Mark Ellingson
Coach



Warren Davis
Coach

VARSITY SCHEDULE

<i>Institute Score</i>		<i>Oponent Score</i>
8	Syracuse University	20
19	Case	11
19	Toronto	13
6	St. Lawrence	30
—		—
52		74

FROSH SCHEDULE

<i>Institute Score</i>		<i>Opponent Score</i>
8	Ithaca Frosh	24
10	Syracuse Frosh	24
21	Alfred Junior Varsity	13
18	Elmira Y. M. C. A.	16
9	Elmira Y. M. C. A.	19
8	St. Lawrence Frosh	22
40	Oswego Normal Frosh	0
—		—
114		118

WRESTLING STAFF

Mark Ellingson, <i>Coach</i>	Robert LeBaron, <i>Frosh Manager</i>
Warren Davis, <i>Freshman Coach</i>	William Garret, <i>Frosh Manager</i>
Earl Trevett, <i>Manager</i>	Scott Sterling, <i>Frosh Manager</i>

MEMBERS OF TEAMS

Bauman	Hill	Sherer
Blount	Jackson	Smith
Borland	Kasan	Sterling
Bush	Lischer	Stevens
Carrol	Melson	Toomey
Eisner	Morgan	Welch
Everet	Pike	Wettering
Fox	Polak	Volk
Herbison	Sandak	Valenti



Arnold, Krajowsky, Parker, Braley, Anderson, Dennis, Terbuska, Kilgress, Welch, Captain Witmeyer

INSTITUTE BASKETBALL

Basketball at Mechanics received a "New Deal" this year. With a new coach and a team with only two of last years lettermen back, they completed a most successful season.

The Institute team won six out of twelve games. This is an excellent record considering they met some of the strongest small college teams in the state, including Buffalo State Teachers, Oswego Normal, and Ithaca School of Physical Education.

With a well balanced team, smooth passing and good teamwork the boys defeated such teams as Hartwick College, Geneseo Normal, Potsdam Normal and Fredonia Normal.

Even in defeat Mechanics looked good. On one occasion when the team was playing out of town and losing by a fairly large score, the referee was heard to give this team credit, "they keep fighting, no matter what the score." No finer compliment could be paid any team.

With nearly all the lettermen back next year, everyone looks forward to a successful season.

Much credit for this years success goes to "Perk" Cohen the new coach. He worked for the team and deserves the appreciation and support of the entire student body.

The men who won the coveted "M" are: Capt. "Stan" Witmeyer, "Norm" Anderson, "Pete" Terbuska, Ralph Parker, "Tommy" Kilgress, "Ed" Walsh, Rolland Braley, "Mike" Krajowski and Manager John Arnold.



*Perry Cohen
Coach*

INDIVIDUAL

<i>Player</i>	<i>Pos.</i>				
Witmeyer	C.
Parker	G.
Anderson	F.
Terbuska	G.
Krajowsky	F.
Braley	G.
Kilgress	F.
Walsh	G.
Denison	G.
Dibble	F.
Totals	



Miller, Hoffler, Shermetta, Smith, Lefko, Stork, Krajowsky, Clark

FRESHMAN BASKETBALL

INSTITUTE BASKETBALL RESULTS

M. I.	51	Genesee Normal School . . .	36
M. I.	29	Buffalo State Teachers . . .	57
M. I.	36	Oswego Normal School . . .	58
M. I.	48	Fredonia Normal School . . .	39
M. I.	38	Potsdam Normal School . . .	36
M. I.	38	Alumni	32
M. I.	23	Oswego Normal School . . .	43
M. I.	47	Hartwick College	28
M. I.	40	Genesee Normal School . . .	45
M. I.	26	Buffalo State Teachers . . .	62
M. I.	27	Ithaca College of Phy. Ed. . .	46
M. I.	29	Hartwick College	25

FROSH

M. I. Frosh	25
M. I. Frosh	12
M. I. Frosh	23
M. I. Frosh	24
M. I. Frosh	10
M. I. Frosh	19
M. I. Frosh	34
M. I. Frosh	28
M. I. Frosh	38

RESERVES

Genesee Frosh	30
Buffalo State Frosh	31
Genesee Wesleyan	32
School of Commerce	28
School of Commerce	35
Genesee Frosh	30
Buffalo State Frosh	31
Genesee Wesleyan	27
Ithaca Phy. Ed. Frosh	45

SCORES

Games	Fouls Goals	Field Goals	Total Point
12	37	71	179
12	17	22	61
12	8	28	64
12	9	21	51
9	3	5	13
11	4	3	10
9	4	9	22
4	4	10	24
4	2	1	4
3	1	2	5
<hr/>	<hr/>	<hr/>	<hr/>
89	172	433	



Harold Brodie
Faculty Advisor





W O M E N ' S
A T H L E T I C S



*Sherman, Benedict, Tarbox, Brownell, Chalker
Marotta, Van Hying, Kenney, Rumont, Munson, Dudley, Edger
Bates, Clark, Randall, Brooks*

BASKETBALL

The basketball team this year consisted mostly of Freshman girls who showed their faithfulness by coming out for practices and games.

The team was successful, winning most of the games, in which it displayed an abundance of pep, enthusiasm, sociability and cordiality to the opponents.

Good luck to our Freshmen for their remaining years of basketball at M. I.!

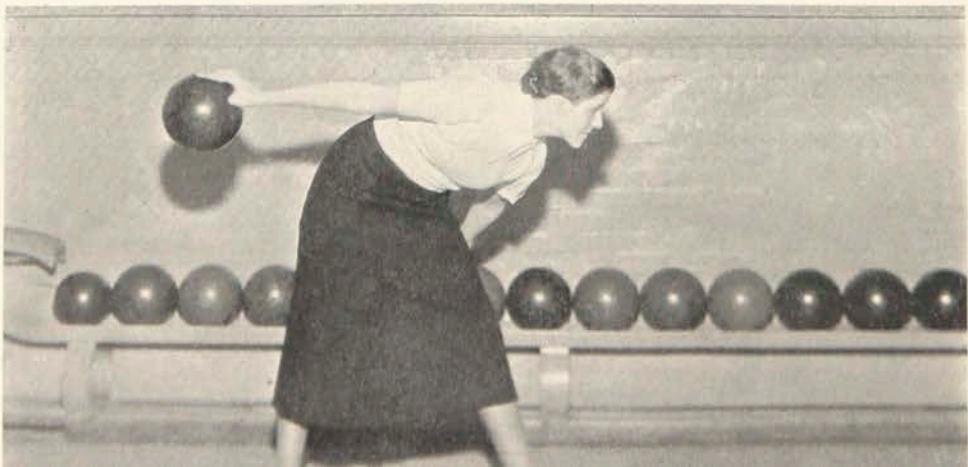
BOWLING

Every Thursday night from October to February brought many an enthusiastic girl to the Brick Church Bowling Alleys. The excellent training that Miss Tarbox gave the girls proved to be of great value. The high score for the year was 164, made by Martha Randall.

There was keen competition between the Frosh and the the upper-classmen at the tournaments that were held the last Thursday of each block.

Here's hoping that next years bowling will go over with a "strike."

Martha Randall





Benedict, Hanson, Burnett, Hettricks, Keeney

GOLF

October found twenty enthusiastic girls under the direction of Margaret Shingle and Priscilla Jenkins, anxious to become enlightened upon the great American game, golf.

To all, this sport appeared very simple but when tried, it proved most complicated. Through the very able instruction of Mr. Feller, the girls reached a very satisfying knowledge of the game.

As in every sport, we find a few "old standbys" for golf. We had Dorothy Kanter, Margaret Shingle, Priscilla Jenkins, Vena Van Hyning, Fuku Matsuoka, Harriet Brownell, Ruth Keeney, Maude Dietrick, Grace Benedict.

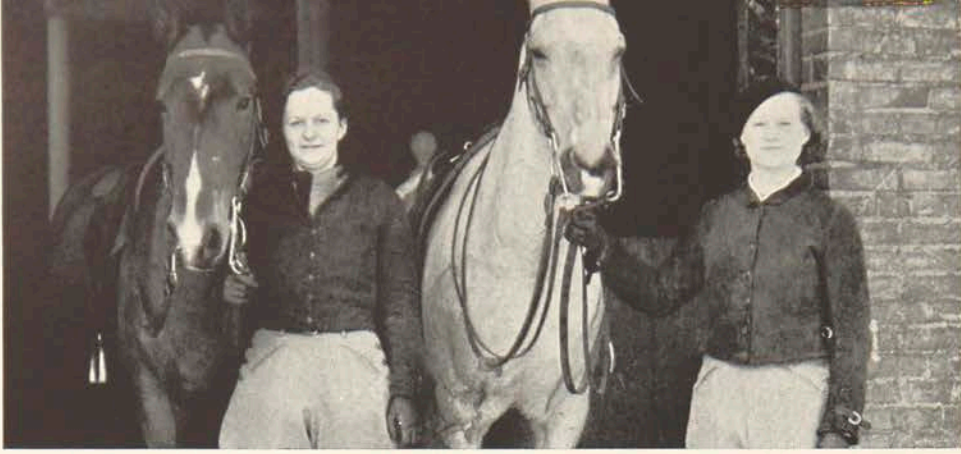
HIKING

On one Saturday morning of every month the orderly business at a grocery store has been interrupted by the descent of the hikers. Garbed in miscellaneous apparel they stormed down the aisles, carefully examining the brands of tomato sauce and occasionally sitting on a cake from sheer exhaustion. Choosing the lunch to be cooked over a blazing fire was clearly the most tiring part of the hike.

Once out of the city they walked for miles along the lake shore or climbed over hills among the buffalo and reindeer at the zoo.

Munson, Edgett, Challser, Robinson, Jones, Slocum





Jones, Kuebne

RIDING

The interest in riding has increased considerably during this past year—the boys having taken it up as well as the girls.

The Fall and Spring classes were held out of doors at Heberles and the winter classes were held indoors at the Armory under the instruction of Army officers.

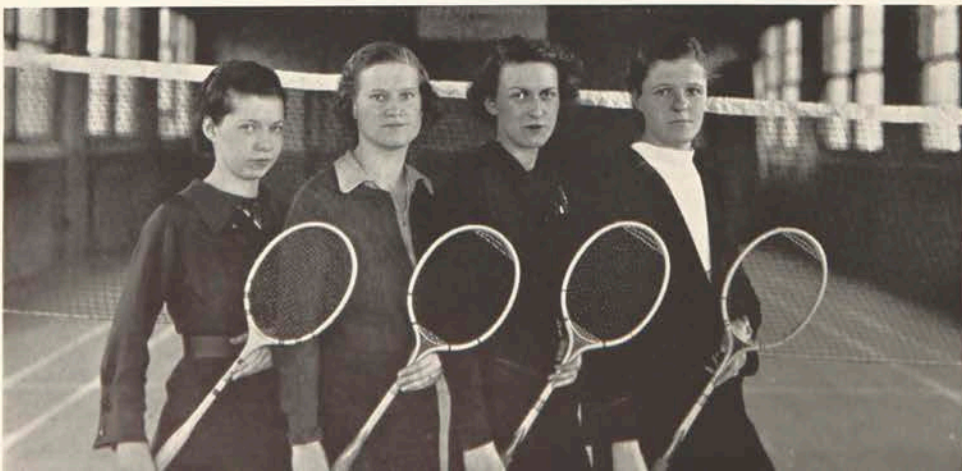
Many bumps and aches were received during the year but they have been overlooked because of the many good times enjoyed in the classes.

BADMINTON

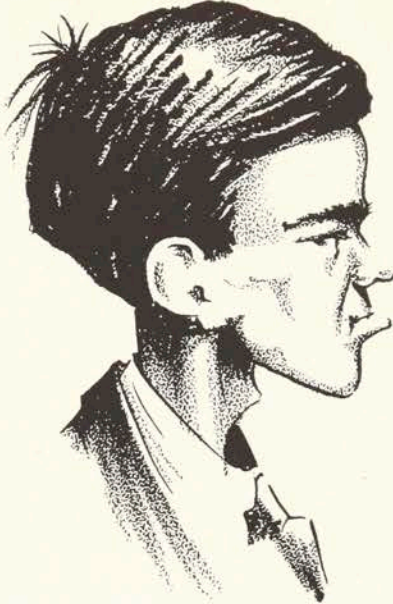
Just the thing for those nice warmish days in the Spring when you just can't seem to stay inside. Several nearby parks in the city have fine courts. Bring your racket, get a net from G. A. A. and off you go for a gay time. In bad weather we play in the gym of the Eastman building.

Badminton, too, is a great game. It is similiar to tennis but differs enough to be interestingly original. This game is fine for early Spring before the call of the out-of-doors is too strong.

Terwilliger, Kuebne, Olmsted, Randall



LEST WE
FORGET



BEVIERITES

WITH APOLOGIES

JED
White

A SHORT STORY TO FILL A PAGE

He awoke with the chattering of birds in his ears. An unusually large number of sparrows had assembled on the gutter pipe to break the peace of the morning. Everybody in the neighborhood except him thought evil thoughts about those birds. To him they meant that nature had again turned on the lights for the Eastern Standard Zone to see and to live another day.

He swung out of bed with no regret, walked to the window, and looked out. The day was perfect, he thought. Dark nimbus clouds were passing quickly through the sky. The wind was blowing. It was going to rain.

A few setting-up exercises, that almost broke his back when the carpet slipped, helped to stimulate his circulation and to make him dizzy. Great stuff, he thought, as he staggered to the door. The door did not push open fast enough, and his big toe of his bare foot hastened to assist. This, of course, caused pain but he only smiled—the idea of his toe trying to break through that heavy door.

To the bathroom he went. The cracked mirror and the dim light revealed that he had to shave again. But, what of that, it was a pleasure to shave with his trusty razor. He took out his shaving equipment. Carefully he drew the razor out of its sheath. Somebody had apparently used his razor to cut a ham bone; there were at least two nicks near one end. He squeezed the shaving cream tube and the last eighth of an inch of cream came out; not enough to shave the beard of a small child. He turned on the hot water tap and cold water ran out. He could stand it no longer. He broke out in an uncontrollable burst of laughter. His laughing caused him to quake so much while he shaved that he cut his upper lip. The blood ran down over his lip. He started to laugh again, because the little red moustache made him look so much like Oliver Hardy of the Laurel and Hardy comedy team.

After shaving and dressing, he walked back to his room to prepare breakfast. Unfortunately, he found that there was only enough coffee left for a half a cup. He rummaged through the cupboard and found an old bun that the mice had saved for him. Good eating, he thought, something like the "Zwebac" that mother used to feed him when he was a child. He set the coffee pot on the fire and walked out on the porch to get the morning paper. It seemed that only one sheet of paper was left; the rest had been scattered over the yard by the wind. He whistled a modern melody while he collected the pages and carefully assembled them. By the time he returned to his room, only a quarter of a cup of coffee was left in the small pot; the rest had boiled over. He drank this bit with as much relish as he would a tasty cocktail and then began to read the paper. The most interesting parts of the continued articles were on the pages that were missing, but that only made him exercise his imagination to supply the endings to the articles.

He looked up at the clock only to find that it had stopped running during the night. He smiled. He had forgotten wind it. However, he guessed that it was time to see that man; that man who had come to his house late last night; the attorney who had told him to see him in the morning; who had told him to come to get the one hundred thousand dollars that he had inherited from his rich aunt. So, he left.

BERNARD RUMBUTIS



FRATERNITIES



*Armes, Persons, Olmstead, Wignall, Rau
Jenkins, Stampe, Simpson, Burkey, Roberts, Glidden*

INTER-SORORITY COUNCIL

OFFICERS

GRACE SIMPSON	<i>President</i>
CAROLYN BENEDICT	<i>Vice-President</i>
ELLEN PERSONS	<i>Secretary</i>
LEONE ARMES	<i>Treasurer</i>
ELIZABETH RAU, PRISCILLA JENKINS, ALBERTA WIGNALL, MARJORIE OL MSTED, GLADYS GLIDDEN.	

The Inter-sorority council was organized in 1920 for the purpose of uniting the sororities of Mechanics Institute. It is composed of two representatives from each of the four sororities, one representative from the faculty, and four faculty advisors. The aim of the organization is to guide the sororities in matters of mutual interest and to establish rules and regulations for the rushing of new members.

This year the Council sponsored two informal receptions in order to meet the schedule of co-operative students. This arrangement promoted the spirit of friendship and proved to be a success, giving an additional opportunity to meet every Freshman girl.

The Council has revised the constitution to meet the changing needs of the students and the school.

This year for the first time an Inter-sorority Formal Dance has evolved, through the co-operative efforts of the Inter-sorority Council, to be held on May 18th.

At this time the Council wishes to extend its appreciation to the members of Mechanics Institute sororities and faculty advisors, for their cooperation in the year 1934-1935.



*Villani, Bishop, Smith
Ebert, Welch, Kunes, Dimpfl
Smith, Dense, Tegtmeyer, Heath, Trevett, Sime*

INTER-FRATERNAL COUNCIL

The Inter-Fraternal Council's program again this year has been very well balanced. The council's balanced program was obtained by promoting educational and athletic competition among the fraternities. Through the awarding of the yearly scholastic cup the council has stressed the prime importance of education in the fraternity and through the athletic cup has sponsored the development of the physical aspect of life.

The social highlight of the fraternal season was the Inter-Fraternal Council Dance, which was held in the spring of the year at the Normandy.

The council is pleased to present the scholastic cup to Pi Kappa Gamma Fraternity for its outstanding scholastic achievements of the past year. The council is equally pleased in presenting the athletic cup to Chi Epsilon Phi Fraternity.

Fraternal Scholastic Ratings

Pi Kappa Gamma	82.652 points
Phi Sigma Phi	82.222 points
Chi Beta Kappa	78.99 points
Chi Epsilon Phi	78.22 points
Chi Delta Phi	75.13 points

Fraternal Basketball League Standings

	<i>Won</i>	<i>Lost</i>
Chi Epsilon Phi	8	0
Chi Beta Kappa	6	2
Chi Delta Phi	4	4
Pi Kappa Gamma	2	6
Phi Sigma Phi	0	8



*Thatcher, Anderson, Kimball, Strause, Meinecke, Armes, Chamberlain, Gustafson
Giles, Brooks, Rau, Karker, Zimmer, Williams*

DELTA OMICRON SORORITY

FACULTY ADVISORS

Mrs. William A. Clark
Mrs. Earl C. Karker

Mrs. Edward H. Lang
Mr. Edward H. Lang

MEMBERS 1935

Ruth Brooks, *Vice-President*

Betty Rau, *President*

Irene Zimmer, *Vice-President*

MEMBERS 1936

Leone Armes
Hester Avery, *Secretary*
Eva Brandt
Mary Ellen Giles
Ruth Gustafson, *Treasurer*

Grace Hoffman
Marion Johnson
Dorothy Kingsley
Ruth Marquart
Ruth Meinecke
Kathleen McKay

Leonore Strouse
Elizabeth Thatcher
Corresponding Sec.
Jane Turnball
Georgiana Tuttle
Gladys Urquhart

MEMBERS 1937

Betty Anderson
Barbara Chamberlain
Virginia Costello

Mary Ellen Means
Edith Moore
Jane O'Hara

Carolyn Paquin
Katherine Wend
Muriel Williams

The Delta Omicron Sorority was founded in 1921 by eight girls, whose friendship formed the same strong bond of union that exists today. Its aim is to establish firm friendships and to promote high ideals and scholastic standing both in the sorority and in the school.

The rush party, a true Scotch affair, proved to be lots of fun, and was followed by the annual pledge dinner at the Rochester Club.

"Friends are, after all, the greatest asset that we may have."





*Marsh, Persons, Sterling, Burtis
Miller, Clark, Wignall, Burkey, Shingle, Yauchzi*

SIGMA KAPPA DELTA

HONORARY MEMBERS

Mr. Byron Culver	Miss Viola Wilson
Miss Mary Havens	Miss Hazel Burkey

SORES 1935

Ruth Austin	Elaine Hudson	Alberta Wignall
Barbara Brinkerhoff	Harriet Miller	Lois Yauchzi
Marian Hess	Anne Morris	

SORES 1936

Marion Burtis	Beatrice Nelson	Margaret Shingle
Adelaide Clark	Ellen Persons	Gertrude Sterling
Katherine Marsh	Ida Jean Polsen	Virginia Warner

The Sigma Kappa Delta Sorority was organized in nineteen hundred and twenty-six for the purpose of promoting scholarship and friendliness among the girls of the schools.

This year's activities, including a rush party on January fourteenth which took the form of a Cruising Party and the Pledge Dinner on March first, were most successful.

The social season was closed by the annual spring dance.

The Sorority wishes to take this opportunity to express its appreciation to the honorary members, advisor, and alumni for their co-operation which has made this year so successful.





*Clarke, Olmstead, Baker, Howe, Dibble, Polley
Klenke, Rehbein, Stampe, Simpson, Moore, Glidden*

PHI UPSILON PHI

HONORARY MEMBERS

Mrs. Lulu Scott Backus

Mrs. Minnie Wyman

Virginia Clarke
Eunice Dibble
Margery Ellis

Mrs. Jean Stampe
SORORES 1935
Gladys Glidden
Florence Howe

Marjorie Olmsted
Hester Polley
Grace Simpson

Carol Baker
Frances Klenke

SORORES 1936
Eleanor Meade

Evelyn Rehbein
Martha Moore

Jean Britton
Betty Baker
Doris Edmonds
Geraldine Gates

SORORES 1937
Helen Ivison
Marion Karle
Grayce Laysen

Rachel Nelson
Elizabeth Reid
Barbara Shafer
Elizabeth Snyder

Phi Upsilon Phi, the first sorority at Mechanics Institute was founded in November 1919. It represents a fine development in growth of friendship and unity among girls of all courses. Its aim is to encourage ideals in personal standards and to stimulate progress toward scholarship.

The social program of the past year has been one of activity. The rush party, took the form of "Nite Life" and proved very successful. On Friday, March the first, the formal pledge dinner was held at Oak Hill Country Club. The eventful season closed with the annual June House Party.

The seniors of Phi Upsilon Phi extend their best wishes for all possible success in the future to their Junior and Freshman sisters, with the hope that they will carry on the ideals and traditions set by the sorority.





*Sawtelle, Carmen, Randall, Scott
Jenkins, Arneke, Benedict, Sherman, Leiter*

ALPHA PSI SORORITY

HONORARY MEMBERS AND ADVISORS

Miss Bertha Thurber

Miss May D. Benedict
Mrs. Stratton

Miss May Gillard

Louise Arneke
Martha Randall

MEMBERS 1935
Carolyn Benedict
Louise Sawtelle

Margaret Leiter
Bertha Sherman

Kathleen Carman
Alice Enders

MEMBERS 1936
Priscilla Jenkins
Francis McShea

Jane Scott
Leditha Johnson

MEMBER 1937
Mary Alice Gage

The Alpha Psi Sorority was founded in nineteen hundred and twenty by ten girls, whose affections for one another, and whose mutual interest led them to the union which has endured to this day.

The ideals of the sorority are to live truly, play fairly, extend a warm friendship to the girls in the school, and to maintain a high scholastic standing.

Its social program of the past year has been one of activity. In accordance with the Inter-Sorority Council, the rush party was held at the dining room of the Knights of Columbus on January 21st, where a delightful evening was enjoyed. The formal pledge party was held at the Olde House Tea Room and the formal initiation at the home of Miss Thurber. May the sorority thrive and prosper throughout the coming years. All possible success is the wish extended by those who will leave the sorority this year.





*Lefka, Kaplin, Morgan, Pike, Neff
Pawnall, Ebert, Genung, Villani, Hurton, Marlante*

CHI EPSILON PHI

FRATRES HONARARES

Dr. J. J. Lawrence
Mr. J. Warren Gillon

Mr. Clarence Tuites
Mr. Ralph H. Braden

Mr. Mark Ellingson

FRATRES 1935

Frank Villani
Horton Genung

Dana French
William Craib

Ray Ebert
Byron Neff

FRATERS 1936

Donald Bishop
William Hutton

Arthur Sinclair
Albert Morlante

Salvatore DeSchino
Chadbourne Hickey

FRATERES 1937

Ronald Morgan
John Pownell

Alexander Lefko

David Kaplan
Richard Pike

Chi Epsilon Phi Fraternity, organized in 1921 to promote and support the social and scholastic activities of Mechanics Institute, has completed another year of outstanding fraternal success.

The social program was inaugurated with the annual Rush Party. This was followed by the seventh annual "Joe College" Hop at Bevier Hall, which pervaded in its collegiate atmosphere, and had as its guest stars, both "Joe College" and "Betty Co-Ed."

The informal pledge dinner and initiation was again held at Conesus Lake while the formal initiation took place at the Chapel of the First Presbyterian Church, with Dr. J. J. Lawrence officiating.

For the second time in three years, Chi Epsilon Phi won the inter-fraternal basketball trophy, being undefeated throughout the season. The Fraternity men took an active interest in all activities of the Institute, and their scholarship, good sportsmanship and fraternal comradeship made for success, both in the fraternity and in the school.





*Crawford, Schider, Geyer, Westcott, Kent, Taber, VanVlack, Fredericks, Smith, Dimpfl, Barkalow, Thompson
Himline, Murphy, Evert, Sterling
Lees, Wood, Barnum, Criley, Dennison, Hazelton
Evans, Toomy, Mabbett, Lee, Tegtmeyer, Huff*

PHI SIGMA PHI

FRATRES 1935

Robert Dimpfl
Franklin Evert
Dean Frederick
Maurice R. Foster

Bernard Geyer
James Lees
Harold Kent

Chester Tegtmeyer
D. C. Wintermute
Ignatius Logwin
Robert V. Crawford

FRATRES 1936

Grenville Barnum
Joseph Taber
Parker Hazelton

Edwin Hennick
George Westcott
Alan Dennison
Edwin Wood

Howard Smith
Walter Shieder
Howard Lee

FRATRES 1937

Norman Van Vlack
James Barkalow
Charles Evans

Norman Huff
Richard Hiline
Jack Toomey

George Thompson
Arthur Mabbett
Scott Sterling

The organization of Phi Sigma Phi, the first greek-letter fraternity at Mechanics, took place in the year 1901. The six charter members comprising the original roll of brotherhood, pledged themselves to loyally support and disseminate the social and educational activities of the Institute. In the thirty-four years of its existance the brotherhood of Phi Sigma Phi has been unceasingly active in the fulfillment of that pledge.

Highlights of the year's activity include; the rush dinner held at the Buckingham Club, meetings at various members' homes, and a glorious spring party at the Rochester Club where new and old members joined alike in great festivity.

The Fraternity is deeply grateful to Brother Walter Criley for his untiring efforts and support in the Fraternity.





*Lockwood, Eisner, Walter, Estes, Jennings, Scheremeta, Smith
Hulbert, Vogtli, Stratton, Lang, Kunes, Fields*

PI KAPPA GAMMA

FRATRES 1937

Peter Scheremeta
Miltch Eisner

James Jennings

Eugene Fields
Raymond Lockwood

FRATRES 1936

Donald Hulbert
Mahon Mauck

Emil Walter
Raymond Estes

FRATRES 1935

Bernard Kunes
Lee Vogtli

Earl Trevett

Adelbert Smith
James Morrison

The Pi Kappa Gamma fraternity was organized in 1929 by a small group of Mechanics Institute students. The fraternity was founded with the object of forming more friendly relations among the members of the student body and to promote high scholastic standing among its members.

During the past year Pi Kappa Gamma has enjoyed the social activities made possible by its members. The annual Rush Party was held at the Gannett House and was well attended by rushees, brothers, and alumni. During the year various stag parties were held. At the close of its calendar the Spring Dinner Dance was given for all its fraternity brothers. For the inspiration and untiring efforts of Edward Lang and Burton Stratton, faculty advisors, the fraternity wishes to extend its deep appreciation.

May this group forever continue to uphold the true purposes for which it was founded.





*Matson, Clark, Miller, Ryan, Fox, Walsb, Kilgress, Leary, Bailey, Hall
Tuttle, Heath, Welch, VanDusen, Culbertson, Arnold*

CHI DELTA PHI

FRATRES 1935

S. H. Bailey
P. S. Culbertson
V. P. Hannon
S. Hill

T. Kilgress
A. C. Newton
W. F. Ryan

J. E. Searles
J. A. Tuttle
W. Van Dusen
J. H. Welch

FRATRES 1936

J. W. Arnold
E. C. Fox
A. Hall

J. Hall
H. E. Heath

A. Kendall
J. M. Leary
C. H. Owen

FRATRES 1937

E. Clark

H. Miller
E. B. Walsh

E. Scherer

The history of Chi Delta Phi dates back to 1914 when it was originally organized as the Dslta Delta Society, which one year later was changed to the Chi Phi Fraternity. In 1920 the organization was incorporated under the statue laws of the state of New York as the Chi Delta Phi Fraternity.

During the past year the Fraternity has enjoyed a most successful season under the able supervision of J. Welch, President; W. Van Dusen, Vice-President; P. Culbertson, Secretary; and S. Hill, Treasurer.

The informal spring party, the high light of the years social calendar, held at Blarney Stone Inn brought to a close the activities of this organization for the 1934-1935 season.





*Lischer, Smith, Stevens, Yerden, Dense, Dean, Mielson, Polak
Sandak, Torp, Parks, Kirkendall, Burns, Pringle, Fletcher, McCall
Donavan, Warlzer, Dill, Naber, Sime, Pike*

CHI BETA KAPPA

FRATRES 1935

Richard Dean
Lewis B. Morgan

Gerard Dill (Vice-President)
David W. Sime (President)
Earl Wallace

FRATRES 1936

Jack Dense
Erwin Fletcher (Secretary Elect)
Harry McCall (Vice-President Elect)
Thomas Park (President Elect)
Edwin Pringle
Fredric Sigel (Treasurer Elect)
Houghton Stevens

Clark Donovan
Marlowe Kirkendall
Kenneth Naber (Treasurer)
Rudy Polak
Victor Sandak
George Smith
Donald Walzer (Secretary)

FRATRES 1937

Willard Burns
Donald Lischer

Fred Nielson
Earl Pike

Myles Yerden
James Borland

Chi Beta Kappa Fraternity was organized in September 1929, for the purpose of promoting good fellowship and high scholastic standing.

The activities of the fraternity during the past year have been varied and most interesting. The annual "rushing" was ably done and the initiation took place at Hilton Beach among a group of lively men and earnest fraternity brothers. Wholesome supper meetings and after-meeting bowling parties vividly dotted the social calendar for the winter months. The social program was climaxed by a smart spring dance at the Odenbach Restaurant.

Horace W. Koch, a new member of the faculty, was heartily welcomed and accepted by the fraternity, as its faculty advisor. His active interest in the fraternity was prominent throughout the year.



AUTOGRAPHS

AUTOGRAPHS

The DuBois Press
College Annual Builders
Rochester, N. Y.

