

INCOMING STUDENTS

ARRIVAL GUIDE CHECK LIST



Move-In Dates

By appointment only:

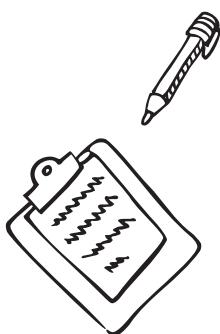
- August 18, 8 a.m. - 5 p.m.
- August 19, 8 a.m. - 5 p.m.



Appointment times are in **30-minute windows to pick up keys and unload vehicles. Make your appointment at myLife.rit.edu.**



Pre-Arrival Checklist:



- Select a move-in appointment at myLife.rit.edu**
- Have a photo ID**
- Print Move-In Dashboard Pass**
Print the night before arrival to ensure you have the most up to date pass based on your assignment.
- Print luggage tags**



Check-In & Key Pick Up

- **Residence Halls, Global Village, and Apartments:** Check-in, pick-up keys and RIT ID in Lots G and H.
- **RIT Inn:** Check-in, pick-up keys and RIT ID at the front desk of the RIT Inn.
- **175 Jefferson:** pick up key and RIT ID at the front desk of 175 Jefferson.
- It is essential to arrive on your selected day and time.
- The 30-minute time slots are staggered to alleviate congestion and provide the best move-in experience for all.
- If you arrive outside your designated appointment time, you may be asked to leave and return at the correct time.
- You must have a photo ID in order to be issued your RIT Housing key.
- Please have your Move-In Dashboard Pass ready for check-in.



Don't leave home without a photo ID! You must have a photo ID in order to be issued your RIT housing key.



Did you print?

- Move-In Dashboard Pass
- Drop Zone Map
- Move-In Arrival Map
- What to Bring Checklist



For more information, visit:

www.rit.edu/housing/move-in-fall

RIT
Housing