

# Better opportunities.

# Bigger impact.



# RIT

An overview for deaf and hard-of-hearing students

Join our  
community of...

scientists

artists

innovators

athletes

problem solvers

performers

researchers

creators

filmmakers

doers

makers

---

**Amazing awaits.**

We'll provide the future-focused degree programs, inclusive environment, real-world career experiences, a vibrant campus life, and unparalleled access services and support.

You bring you.

We are creating the most powerful, successful network of deaf and hard-of-hearing professionals in the world. Join us and help move the world forward.



[rit.edu/ntid/amazing](http://rit.edu/ntid/amazing)



# Find your fit.

We welcome all.  
Connect with other students like you.

**Fitting in at RIT** is about students with unique identities, experiences, and perspectives coming together to collaborate, create, innovate, and thrive.

Here you can be who you are and explore who you want to be. This community will welcome, support, and celebrate you. Deaf and hard-of-hearing students make

meaningful connections with classmates, faculty, and staff and find a sense of belonging from the minute they step on campus.

At RIT you'll find other students like you, and you'll discover more about yourself than you ever knew.



[rit.edu/ntid/fit](https://rit.edu/ntid/fit)



**RIT caters to both my general needs and my specific needs as a deaf student. All campus activities are inclusive, and it's incredibly easy to develop as a person here. I found my identity at RIT, and I have done things I had never imagined were possible.**

**BOBBY MOAKLEY**

Environmental Science/  
Science Technology and Public Policy  
Boston, Massachusetts  
Former RIT Student Government President





“

I knew to be successful in college I needed to find a place where I would be comfortable and accepted. That's what I found at RIT. I love that there is such a diverse group of deaf and hard-of-hearing people here. There is no other place in the world like RIT.

**LANIECE OLIVER**

Business Administration  
Baltimore, Maryland



“

At RIT, I was able to combine aspects from my passion in chemistry and business and create my own major in these different fields of study. The resources I found here specifically for deaf and hard-of-hearing students have truly benefited me. I am getting a well-rounded education, hands-on experiences, and a network of support, which help me to be successful.

**ADAM HSU**

Laboratory Science Technology/  
Applied Arts and Sciences  
Oakland, California



“

The opportunity to immerse myself for the first time into a Deaf community and get the access services I need to be successful in my major strongly influenced my decision to apply to RIT. I love the sense of community here and shared understanding, no matter your background or how you communicate.

**CECE GALLAGHER**

Biomedical Sciences  
Inwood, West Virginia



# From here to anywhere.

No matter what you're planning next, you can hit the ground running with an RIT degree. Pursue the academic program that suits you best. And if you're unsure about what you'd like to study, we'll work with you to discover your passions and unleash your potential.

## **Jump-start Your Career**

You can engage in cooperative work experiences, internships, undergraduate research, study abroad, service learning, and more to gain leadership experience, global awareness, and marketable skills that will set you apart as you pursue a career or graduate study.

With RIT's cooperative education program—the fourth oldest and one of the largest co-op programs in the world—you'll apply what you're

learning in the classroom to a real-world job before you graduate. Your co-op can offer you paid professional experience and is a great way to develop connections and relationships that can help advance your career, add depth to your resume, and make you more marketable.

RIT's co-op partners include Apple, Boeing, Google, Microsoft, and many other Fortune 500 businesses.

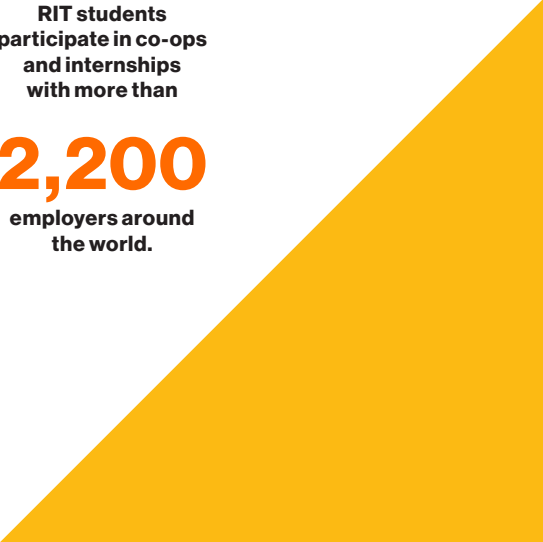
Each year, more than

**4,100**

**RIT students  
participate in co-ops  
and internships  
with more than**

**2,200**

**employers around  
the world.**





## Individual Career Guidance

Employment specialists in the NTID Co-op and Career Center work exclusively with deaf and hard-of-hearing students and will work with you throughout your time at RIT. Services include employment advising and assisting with job search preparation.

NCCC staff network with employers across the country to develop opportunities for deaf and hard-of-hearing students and graduates. Campus-wide career fairs are held annually, including one specifically to recruit deaf and hard-of-hearing students for co-ops and permanent jobs.

# 10,000+

deaf and hard-of-hearing RIT/NTID alumni working around the world



## A model for transfer student success

Kayley Judd, an RIT/NTID mechanical engineering technology student from Vancouver, Washington, transferred from another college because she felt lonely as the only deaf student in her major. She has no regrets on transferring and is grateful for all the opportunities she has had at RIT.

Judd established N.E.R.D. Girls in STEM, a new club focusing on deaf and hard-of-hearing female students; sat on the Cross-Registered Student Advisory Board as a representative for

the College of Engineering Technology; and organized and led the Deaf in STEM conference at RIT for her peers to connect with STEM professionals. She also completed two manufacturing co-ops at Proctor and Gamble.

“RIT provides me with an enriching environment to learn and grow. The opportunities I get, connections I make with faculty who are invested in my success, and friendships I have with deaf and hearing peers from all over the world, have made my time at RIT unforgettable.”

# Hit the ground running



**Abraham Glasser** credits his co-op experiences at Microsoft and NASA for helping him determine that he didn't want a typical 9-to-5 job. Instead, he realized that a career developing accessible technologies for deaf and hard-of-hearing people would fulfill a passion for research. His participation in the National-Science-Foundation-funded Research Experience for Undergraduates helped him home in on his passion. Glasser earned the Outstanding Graduate Award in the bachelor's degree category and completed his education in RIT's computing and information sciences doctoral degree program to become RIT's first deaf Ph.D. graduate.



**Nicole Pannullo**, a biochemistry major, is the first hard-of-hearing RIT student to be named a Barry Goldwater Scholar—the highest undergraduate award of its kind in the natural sciences, math, and engineering fields. As an undergraduate research fellow at the National Eye Institute, she gained confidence in both her technical and intellectual skills. Her goals are to pursue a Ph.D. and run her own lab in the future.



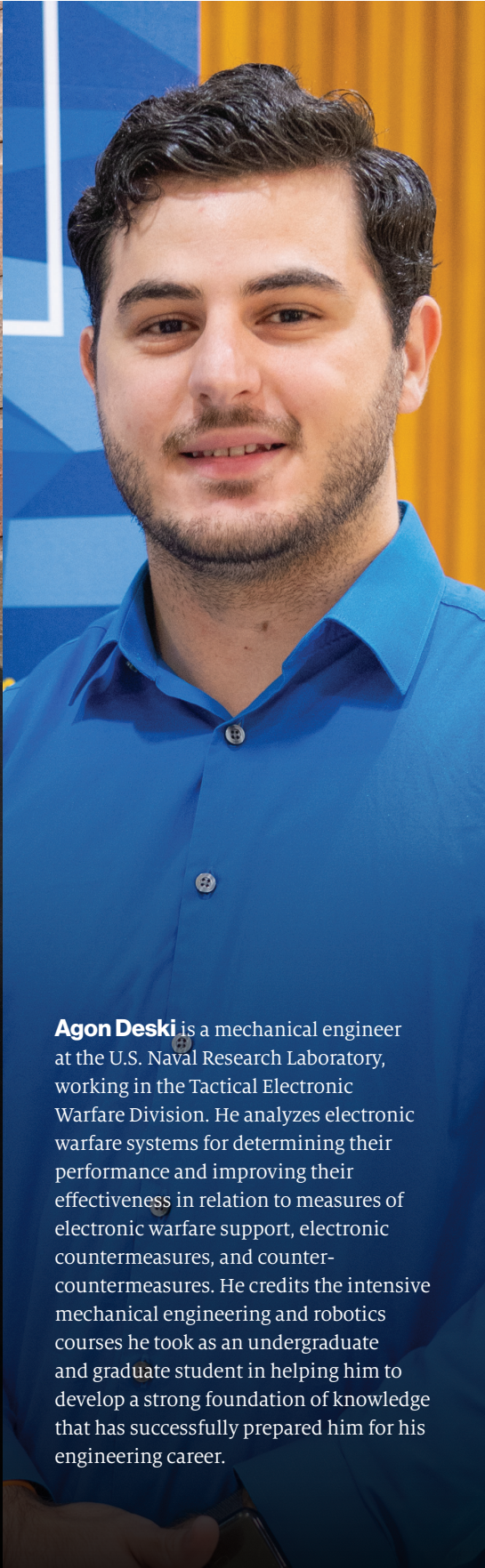
**Rachel Taylor**, a software engineering major, says the resources available for deaf and hard-of-hearing students influenced her decision as a deaf person to choose RIT. She is especially thankful for the NTID Co-op and Career Center that works with employers around the country to facilitate hiring deaf co-op students and graduates. She got hired by JP Morgan Chase in California as their first deaf software engineering intern thanks to the efforts of NCCC. Taylor says having a career center that specializes in helping deaf and hard-of-hearing students get co-ops and jobs makes RIT the perfect place to prepare for her career.



# when you graduate.



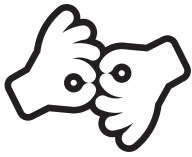
**Cortez Harris**, a criminal justice major, landed a job at the Wisconsin Department of Corrections as a probation and parole officer. While an undergraduate student at RIT, he was involved in extracurricular activities with student-led organizations such as Ebony Club and the Criminal Justice Student Association, which helped him gain critical communication, problem-solving, and leadership skills to prepare for a successful career. Harris says his involvement with organizations on campus benefitted him in his ability to advocate for the community and make a difference in the lives of others.



**Agon Deski** is a mechanical engineer at the U.S. Naval Research Laboratory, working in the Tactical Electronic Warfare Division. He analyzes electronic warfare systems for determining their performance and improving their effectiveness in relation to measures of electronic warfare support, electronic countermeasures, and counter-countermeasures. He credits the intensive mechanical engineering and robotics courses he took as an undergraduate and graduate student in helping him to develop a strong foundation of knowledge that has successfully prepared him for his engineering career.



**Barbara Essex** earned an associate degree in laboratory science technology and a bachelor's degree in biomedical science. Her classroom work prepared her well for her co-op experience as an intern at Dow Chemical Company because she got extensive hands-on experience with lab equipment in her classes. She also benefits from being a research assistant at the RIT/NTID Deaf Health Care and Biomedical Science Hub that supports pathways to health care careers and creates a network for deaf scientists. She says her co-op and research and networking opportunities created the best experiences for her during college and prepared her for a successful career.



# 135

in-house interpreters



# 55

real-time captionists



# 500+

trained notetakers

38,029  
hours  
outside  
classroom



86,535  
hours in  
classroom

# 124,500+

interpreting hours

1,364  
hours  
outside  
classroom



26,270  
hours in  
classroom

# 27,600+

captioning hours

# Access your future.

## Access Services and Support

RIT provides one of the most accessible education communities in the world for deaf and hard-of-hearing students.

RIT is one of only six universities in the nation that has been named a **Microsoft Accessible University** for its endeavor to improve upon and provide cutting-edge accessibility solutions.

If you take courses in RIT's College of Art and Design, Saunders College of Business, Golisano College of Computing and Information Sciences, Kate Gleason College of Engineering, College of Engineering Technology, College of Health Sciences and Technology, College of Liberal Arts, College of Science, School of Individualized Study, or Golisano

Institute for Sustainability, you can choose from among:

- sign language interpreting services,
- FM/Roger,
- real-time captioning services, and
- notetaking.

Alternative services also may be provided.

In addition, you will have access to educational support services such as tutoring by experienced faculty tutors, personal and career counseling, and academic advising. These faculty tutors, counselors, and advisors are skilled at working with deaf and hard-of-hearing students of all communication modes.

If you take NTID courses, faculty members will communicate directly using a variety of strategies, such as:

- sign language with voice,
- sign language without voice,
- spoken language (FM/Roger systems are available),
- printed/visual aids,
- web-based instructional material, or
- individual tutoring.

In cases where a faculty member's communication strategies do not appropriately meet your needs, you can request access services from the Department of Access Services.

An assigned counselor will work closely with you to help plan your collegiate experience and provide personal, social, career, and academic advising and counseling services.

[rit.edu/ntid/access](http://rit.edu/ntid/access)





## **Audiology and Speech/ Language Services**

You don't have to leave RIT's campus for audiological and speech/language services. RIT/NTID in-house audiologists and speech-language pathologists are certified by the American Speech-Language-Hearing Association and are specifically trained to work with deaf and hard-of-hearing individuals.

### **Audiology**

The Audiology Center offers a variety of free services, including:

- hearing tests
- consultations
- Roger (FM/DM) and other equipment loans
- speechreading and/or listening training

- hearing aid and cochlear implant adjustments
- troubleshooting, repairs, and upgrades

An additional advantage is discounted pricing for new hearing aids and accessories. You also can purchase batteries, custom sound/swim plugs and earmolds, and other supplies.

### **Speech/Language**

The Speech and Language Center offers individualized services, and can focus on a variety of areas, such as:

- speech intelligibility
- grammar and technical/professional vocabulary and practice
- communication strategies for work-related interactions/job interviews

- presentation skill development and practice
- use of current mobile applications as communication tools

The Speech and Language Center offers equipment and software that provides visual feedback for production and facilitates conversational practice.

### **American Sign Language**

RIT also offers optional introductory American Sign Language classes for deaf and hard-of-hearing students who are interested in learning ASL as well as courses for students who use ASL and want to expand their skills.

# An investment

# that pays.

When it comes to helping deaf and hard-of-hearing students graduate and get jobs, there is no better place than RIT.

## Deaf and hard-of-hearing RIT alumni thrive in all economic sectors



**Business and Industry**

67%



**Education and Non-Profit**

24%



**Government**

9%

**Deaf and hard-of-hearing RIT grads are in demand.**

# 96%

of students who seek jobs after graduation find one within a year.

## Selected national and international companies that have hired RIT/NTID students and graduates

- > BNY Mellon
- > Caterpillar, Inc.
- > Defense Finance and Accounting Service
- > Dow Chemical Company
- > General Electric
- > Google
- > IBM
- > Lockheed Martin
- > Merck
- > Microsoft
- > Monroe County Medical Examiner's Office
- > NASA
- > National Institutes of Health
- > Naval Supply Systems Command
- > Solar Turbines
- > Tesla Motors
- > Texas Instruments
- > Toyota
- > Tufts University
- > U.S. Department of Defense
- > Whirlpool
- > Yahoo!

# Higher career earnings

According to a study conducted with the Social Security Administration, deaf and hard-of-hearing RIT graduates had higher career earnings than their deaf and hard-of-hearing peers who attended other postsecondary institutions.

178%  
more

## Median Salary at Age 50\*

\*Median salary at age 50 according to a study conducted with the Social Security Administration.

95%  
more

## Average Salary

Deaf and Hard-of-Hearing RIT Graduates  
(Bachelor's)

Deaf and Hard-of-Hearing RIT Graduates  
(Associate)

Deaf and Hard-of-Hearing Graduates of  
Other Postsecondary Institutions

## Don't just take our word for it.

Each year, RIT is recognized by several external guides and rankings for its value and affordability.

- U.S. News & World Report:
  - › Ranked 5<sup>th</sup> among **"Top Schools for Co-op and Internship Programs (2024)."**
  - › Ranked 41<sup>st</sup> among **"Most innovative Schools (2023)."**
  - › Ranked 42<sup>nd</sup> among **"Best Value Schools (2024)."**
- Wall Street Journal/Times Higher Education:  
Ranked 38<sup>th</sup> for **"Student Engagement (2023)."**
- Money Magazine: Named among **"Best Colleges in America (2023)."**

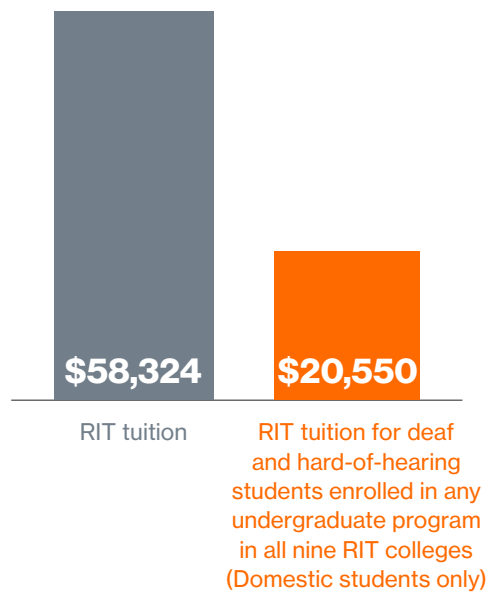
# Exceptional value

Because RIT receives federal support, students who are deaf or hard of hearing pay less than one-half of RIT's regular tuition rate.

In addition to the tuition reduction, you'll have a full array of financial aid options to help you cover the cost of education, including scholarships, grants, loans, state-based Vocational Rehabilitation support, and Supplemental Security Income assistance.

[rit.edu/ntid/affordableexcellence](https://rit.edu/ntid/affordableexcellence)

2024-2025  
Tuition Comparison



## By the numbers

**\$22,243**

average financial aid per domestic deaf or hard-of-hearing student

**93%**

of undergraduate deaf and hard-of-hearing students receive financial aid

**\$24.4m**

in financial assistance last year from all sources for deaf and hard-of-hearing students





## Diverse Interests. One Community.

At RIT, we serve more than 19,000 students, including 1,100 students from all across the nation and the world who are deaf or hard of hearing.

Here, you can explore your passions and hobbies alongside your deaf, hard-of-hearing,

and hearing peers. With more than 300 student clubs and organizations, you're going to find something fun—and make many friends along the way.



[rit.edu/ntid/sl](https://rit.edu/ntid/sl)

# RIT

**Rochester Institute of Technology**

NTID Office of Admissions  
Lyndon Baines Johnson Hall  
52 Lomb Memorial Drive  
Rochester, New York 14623-5604

ADDRESS SERVICE REQUESTED

First Class Mail  
U.S. Postage

**PAID**

Rochester, N.Y.  
Permit 626

# Orange is going to look good on you.

To really experience what RIT is like, come for a visit.

## Schedule Your Visit

Meet our brilliant faculty and take a deeper dive into our academic programs, vibrant campus life, and inclusive community. Experience the extraordinary at RIT.



## Ready to apply?



## Get in touch

**Phone:** 585-475-6700, toll free in the U.S. and Canada at 866-644-6843, or by videophone at 585-743-1366

**Email:** [NTIDAdmissions@rit.edu](mailto:NTIDAdmissions@rit.edu)

**Web:** [rit.edu/ntid](http://rit.edu/ntid)

**Fax:** 585-475-2696



@ritntid



@ritntid



@ritntid



@ritntid



@ritntid



RIT  
Nondiscrimination  
Notice

© 2024 Rochester Institute of Technology. All rights reserved.  
RIT and NTID are registered trademarks of Rochester Institute of Technology.  
15M-P3276-6/24-HUB-JSA