

SUSTAINABILITY INSIDER
| Where research meets impact |

ABOUT US RESEARCH WORK WITH US

How food systems work and why they matter

Take a deep dive into food systems, the impact of wasted food, and the promise of a circular food economy.

[READ MORE](#)

The Golisano Institute for Sustainability (GIS) is a global leader in sustainability education and research that partners with business and government sponsors to solve complex, systemic problems. This newsletter offers a look into what we've been up to over the past quarter with a focus on how recent projects have helped our partners to move forward on sustainability.

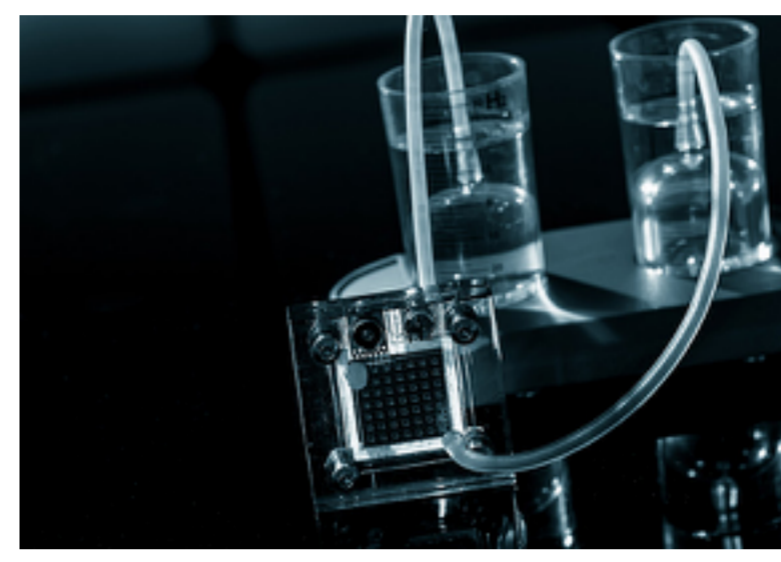
Our Blog

Lessons learned, tips, and advice for effective integration of sustainable innovation into business products and processes.



What is biochar and how is it made?

Learn about the unique role biochar can play as part of a sustainable, circular economy.



What is green hydrogen energy?

Take a deep dive into green hydrogen and its potential as part of the world's clean energy mix.

Sustainability in Action

Discover how we're helping our partners identify innovative solutions that lower environmental impacts and deliver commercial success.



How GIS is helping the United Nations to revolutionize manufacturing

A report by Nabil Nasr, director of GIS, paves the way for remanufacturing at the global level.

[READ MORE](#)

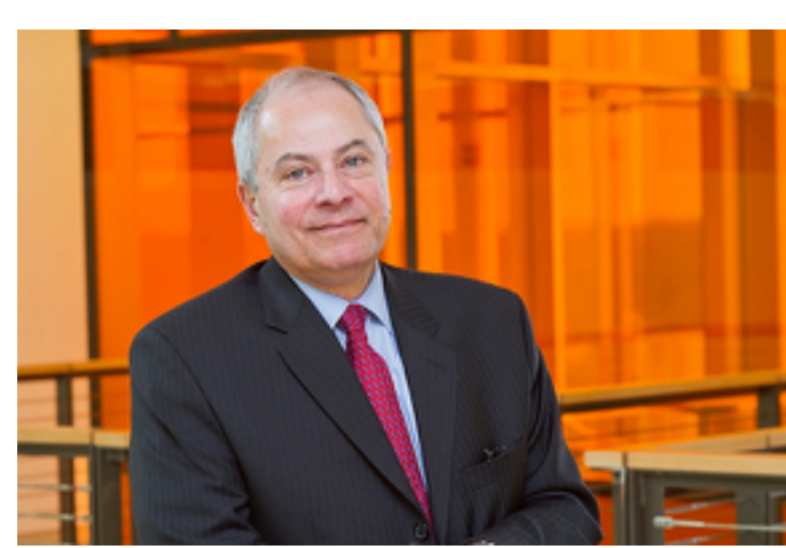
How RIT researchers are closing the loop on wasted food

A team of RIT researchers are finding new ways to minimize and recycle food waste.

[READ MORE](#)



Notable & Newsworthy

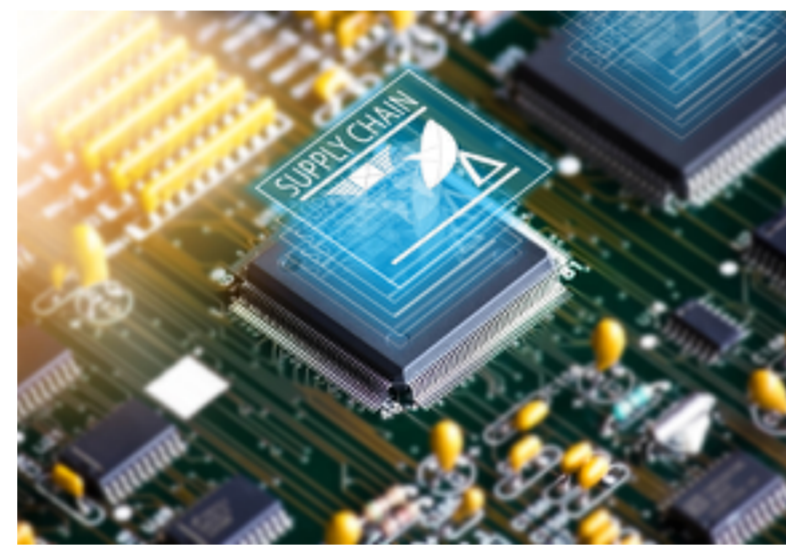


RIT's Nabil Nasr part of advisory board advising federal leaders on top climate initiatives



GIS selected to provide technical and program support to the For ClimateTech initiative

Research Publications



How vulnerable is the electronics supply chain to disruptions?



Can a plastic to-go lid be made with spent coffee grounds?

Debatable

If your community provided composting bins, would you separate your food waste from your garbage?

- Yes, I would use it
- Yes, my area has it and I'm already using it
- I already sort my food waste for personal composting
- No, I wouldn't use it

Alumna Spotlight



Shahana Althaf '19 (Ph.D.)

Shahana Althaf, a postdoctoral fellow at Yale University's Center for Industrial Ecology, has been named a fellow of the World Economic Forum's Global Future Council on Net-Zero Business 2020-2021. The council advises business leaders with corporate roadmaps to deliver net-zero emissions. During her time at RIT, her research focused on the sustainability implications of consumer electronics adoption and has been used to inform state e-waste collection policies in the U.S. Congrats Shahana!

Digital Maturity Assessments



Industry 4.0

is a game changer for manufacturers

We help you:

- Assess where you are
- Prioritize digital capabilities
- Create a roadmap for impactful transformation

[Learn More](#)